

ARVIN-EDISON WATER STORAGE DISTRICT

REPORT OF DISTRICT OPERATIONS

April 2026



*Site Clean-Up, Grading, and Mowing
at Sycamore Spreading Works*

20401 East Bear Mountain Blvd.
Mailing: P.O. Box 175
Arvin, CA 93203-0175
Phone: 661-854-5573
Fax: 661-854-5213
E-mail: arvined@aebsd.org
Website: aebsd.org

WATER SUPPLY

Friant Division Central Valley Project (CVP)

- The initial 2026 Water Year allocation was announced on February 26, 2026, at 100% Class 1, which amounts to 40,000 AF, and 0% Class 2. There was concern that the 100% Class 1 allocation would be reduced, however, April storms have helped to keep the allocation at 100%.
- Exhibit “A” provides additional supply information for 2026 Water Year supplies.

San Joaquin River (SJR) Restoration Program (SJRRP)

- On April 20, 2026, the SJRRP transmitted to the Restoration Administrator (RA) an updated Restoration Allocation for the 2026 Water Year. The allocation is based on a 75% Exceedance forecast of 1,444,000 AF of natural river runoff, which is a Normal-Dry water year type and results in a restoration flow allocation of 282,547 AF.
- The RA submitted a proposed schedule on May 4, 2026, which recommends the release of 214,185 AF of Restoration Flows to the river, which is less than the restoration allocation due to downstream capacity limitations, leaving approximately 64,944 AF (net) of potential Unreleased Restoration Flows (URF).
- On March 19, 2026, 10,479 AF (net) of URFs were made available to Friant Class 1 contractors, of which the District’s portion is 530 AF. This quantity must be used by April 15, 2026.
- On May 5, 2026, 10,002 AF (net) of URFs were made available to Friant Class 2 contractors, of which the District’s portion is 2,224 AF. This quantity must be used by May 24, 2026.
- To date, the District has received 2,602 AF of Recapture supplies.
- District’s Recovered Water Account (RWA) balance is approximately 68,000 AF. RWA credits allow the District to purchase water for \$10/AF during wet periods (uncontrolled season but subject to canal prorate) when RWA water is declared.

Other CVP Contractors

- The current North-of-Delta 2026 allocation is 100% for Agricultural Service Contractors.
- The current South-of-Delta 2025 allocation is 20% for Agricultural Service Contractors, this includes the District’s Fresno County supply which amounts to 600 AF. However, due to Delta water quality concerns and pumping limitations, it’s possible that not all the 600 AF will be made available to the District.

State Water Project (SWP)

- The current California Department of Water Resources 2026 State Water Project allocation is 30%.

Kern River

- The Kern River 2025 April through July runoff is 63% of average.

Water Bank Facilities

- The District is expected to recover approximately 62,000 AF of previously banked supplies in Water Year 2026.

Metropolitan Water District (MWD) Program

- MWD account balance remains at 100,201 AF.
- The District obtained its sixteenth consecutive year approval from the State Water Resources Control Board regarding a Petition for a Consolidated Place-of-Use (CPOU) which now expires on July 22, 2026.
- The CPOU petition includes the ability to exchange all types of Arvin-Edison supplies with MWD including unbalanced exchanges.
- The District's 10-year NEPA documentation is complete and approved until March 2034.
- In January 2026, the District utilized the Water Quality Sub Account mechanism with MWD and delivered ~5,700 AF of Class 2 water which was returned the following February and March.

Rosedale-Rio Bravo Water Storage District (RRBWSD) Program

- The District's account balance in RRBWSD on March 2026 was approximately 35,000 AF. District anticipates to receive 10,000 AF of returned bank supplies from RRBWSD in during Water Year 2026, leaving approximately 25,000 AF in the account balance.

District Partnerships

- The District received a ten-year approval (through Water Year 2035) from USBR to transfer and exchange Friant Division CVP water to Kings River Area Agencies and Kern County Districts.
- The District has participated in water management programs with the following districts/agencies in Water Year 2025 to date:

Fresno County
Madera Irrigation District
Del Puerto Water District
City of Bakersfield

Rosedale Rio Bravo WSD
SJRRP Recapture/Recirculation
Chowchilla Water District

WATER DEMAND

District turnout deliveries (not including on-farm recharge) for the month were 13,206 AF.

- The following is a summary of surface water deliveries for April 2026.

<u>Water Type</u>	<u>Month of April</u>		<u>Water Year to Date</u>	
	10 Yr. Avg.	2026	10 Yr. Avg.	2026
SWSA	11,116	13,206	15,973	23,981
In-Lieu		0		0
Temporary		0		0
Spreading*	n/a	120	n/a	2,565
	Total	13,326	Total	26,546

*Direct spreading, including Landowner (on-farm) Recharge

- Exhibits "B-1", "B-2", and "B-3" illustrate the delivery data.
- The month's peak daily in-District demand was 426 cfs, which occurred on the 7th.
- Exhibit "C-1" details Canal Water Quality information.
- Exhibit "C-2" presents the Aquatic Pest Control Treatments (\$0 for Calendar Year 2026).

GENERAL

- District vehicles consumed an estimated 3,922 gallons of fuel during the month (average fuel efficiency of 13.34 mpg).
- There were 447 hours lost due to illness and 96 hours lost due to on-the-job injuries.
- Exhibit "D" highlights precipitation, temperature, and wind speed.
- Exhibit "E" summarizes energy consumption and power demand.



*Frank Lozano's Retirement Celebration
(left to right: Ryan Coday, Frank Lozano,
David Zaragoza and Kevin McGill)*

ENGINEERING DEPARTMENT ACTIVITIES

Routine Activities

- Review and accounting of District's water supply and related contracts.
- Administration or proposals of water management and wheeling agreements.
- Groundwater level surveys and associated exhibits.
- Water quality testing.
- ArcGIS database updates/maintenance (facilities, water service areas, boundaries, etc.).
- CIMIS station management (<https://cimis.water.ca.gov/Stations.aspx>).
- Land use/crop surveys with data entry.
- Monthly/annual reports regarding water deliveries, water use, and energy use.

Grants & Funding Opportunity Updates

Project Name	Drought Recovery Wells and Conjunctive Use Modeling Tool	Forrest Frick Unit Project		White Wolf Groundwater Sustainability Agency	Groundwater Flow Model and Decision Support Tool	North Canal Spreading Works Expansion Project		DiGiorgio Unit Phase 2b-5 Project	Tejon Spreading Works Project	
Grant Name	USBR 2023 WaterSMART Drought Recovery Program Grant	DWR Round 2 Integrated regional Water Management Grant	Community Project Funding Grant	DWR – SGM Round 2 Grant	USBR 2023 Water SMART Applied Science Grant	DWR – Flood Diversion Recharge Enhancement (FDRE) Grant	FY2026 Community Project Funding Grant	USBR 2024 Planning and Project Design Grant	FY 2027 Community Project Funding Grant	USBR 2026 Water SMART Drought Response Program
Grant Type	Federal	State	Federal	State	Federal	State	Federal	Federal	Federal	Federal
Grant Status	Awarded	Awarded	Awarded	Awarded	Awarded	Awarded	Secured	Awarded	Funding Request Submitted	Preparing Application
Grant Amount	\$2 Million	\$2 Million	\$3.25 Million	\$4.8 Million	\$95,000	\$999,500	\$2 Million	\$308,170	\$5 Million	\$1,500,000
Notes	<i>Final Grant Report Due 7/29/26</i>		<i>Grant Agreement Received 4/3/26</i>		<i>Grant is complete</i>		<i>1/8/26 - Valadao press release issued for funding recipients 2/4/26 - Received official notification from EPA</i>		<i>3/9 - Funding Request Submitted to Valadao's office</i>	<i>Grant Application due 7/28/26</i>

- NRCS landowner incentive programs assist with implementing various conservation activities, including but not limited to, irrigation system improvements, filtration needs, water/nutrient/pest management, and engine replacement:
 - Phone (661) 336-0967
 - Website (www.ca.nrcs.usda.gov)
- North West Kern Resource Conservation District provides discounted on-farm irrigation distribution uniformity and efficiency testing
 - Phone (661) 281-2746
 - Website (<http://northwestkernrcd.org>)

AEWSD Current Construction Projects

	N24 & N26 Recovery Wells – Drilling & Equipping	N24 & N26 Recovery Wells – Electrical	S39 & T102 Wells – Drilling & Equipping	S39 & T102 Wells – Electrical
	Bakersfield Well & Pump	A-C Electric	Bakersfield Well & Pump	TBD
Construction Start Date	March 2025	March 2025	November 2025	TBD
Punch List	March 2026	March 2026	June 2026	TBD
Final Project Close-Out	March 2026 – SUBSTANTIAL COMPLETION ISSUED	March 2026 – SUBSTANTIAL COMPLETION ISSUED	June 2026	TBD
Current Construction Contract Costs	\$2,144,560 (Change Order #1-6 for revised quantities and additional days due to material delays)	\$557,706.37 (Change Order #1-4 for fencing, external display for soft starts and additional days due to material delays)	\$2,229,092	TBD (Board Approved Amount \$525K)
Total Grant Funding	\$2,000,000 (Federal Share) \$2,160,421 (Recipient Share)		N/A	N/A
Notes	*Time Extension approved. Grant Funding needs to be spent by March 31, 2026. Final grant report due July 29, 2026.			Electrical Construction pricing is being obtained.

	NCSW Expansion – FDRE – 1 st Contract	NCSW Expansion – FDRE – 2 nd Contract	White Wolf Subbasin 850 Canal Intertie	White Wolf Temp Water Program	Frick Unit Phase 2 – Main Line
	Pay Dirt Construction	Super Ag Construction	Laurel Ag & Water	Superior Ag Construction	Superior Ag Construction
Construction Start Date	July 2025	December 2025	July 2025	October 2025	February 2026
Punch List	November 2025	May 2026	March 2026	March 2026	October 2026
Final Project Close-Out	January 2026 - COMPLETE	May 2026	April 2026 – SUBSTANTIAL COMPLETION ISSUED	April 2026 – SUBSTANTIAL COMPLETION ISSUED	October 2026
Current Construction Contract Costs	\$1,048,815.25 (Change Order #1-5 approved to add raising of exterior levees work, no cost time extension and rip rap)	\$763,699.83 (Change Order #1 approved 12/3/25 to extend completion date due to raising of exterior levees work. Change Order #2 approved for IBS boxes and time extension for material delay)	\$649,563.47 (Change Order #1-5 approved for extra work, weather delays and no cost time extension)	\$785,012.69 (Change Order #1-3 approved for extra work, weather delays and no cost time extension)	\$4,354,795.08
Total Grant Funding	\$999,500		\$925,000	\$1,345,000 (\$212,000 is allocated to WRMWSD)	\$1,000,000 (DWR Estimated Remaining Funds after Phase 1)
Notes	*FDRE Grant Funding needs to be spent by March 31, 2026. Final reimbursement deadline is May 1, 2026		*Grant Amendment Approved to extend out to 6/30/2026	*Grant Amendment Approved to extend out to 6/30/2026	EPA Funding will be used for Phase 3 – Laterals DWR Funding to be spent by March 2027.

AEWSD Upcoming Construction Projects

	Frick Unit Phase 3 - Laterals	North Canal Spreading Works Expansion
Bid Advertisement	June 23, 2026	TBD
Board Approval	August 11, 2026	TBD
Anticipated Notice to Proceed	September 8, 2026	TBD
Mobilization Start	September 2026	TBD
Projected Completion Date	June 2027	TBD
Current Estimated Costs	\$4,195,000	\$5,000,000
Total Grant Funding	\$3,250,000 (EPA Grant Funding will be allocated to Phase 3 of the Frick Unit Project)	\$2,000,000 (EPA Grant Funding)
Notes	<p>*DWR Grant Funds must be spent by March 31, 2027</p> <p>*SPA Grant Funds must be spent by June 30, 2028</p>	<p>* Bidding and Construction start are dependent on EPA grant agreement.</p>

Other Activities

- Administration and accounting of on-going water management programs.
- Technical support and review of ongoing projects/studies such as:
 - Potential Interconnections with other Districts.
 - Pump Replacement Program.
 - Turnout Modification Requests.
 - Temporary and/or In-Lieu Water Service Contract Requests.
 - Pump Efficiency Testing.
 - Real Time Water Quality Monitoring.
 - Stand tank Painting Project.
 - Stand tank and pressure vessel inspections.

SGMA Activities

- The Kern Subbasin continuation hearing was held September 17, 2025. The State Water Resources Control (SWRCB) board was satisfied with the 2025 GSP and decided to send the Subbasin back to the California Department of Water Resources. The official letter from the SWRCB sending the Subbasin back to the DWR was issued December 8, 2025.
- The Kern Subbasin 2025 GSP is now being implemented.
- Continued coordination meetings and outreach activities.
- Attended various GSA meetings.
- Collected groundwater levels and water quality data.

- Continued coordination efforts with South of Kern River GSAs (posted on website www.sokrgsp.com).
- Continued implementation and coordination efforts with White Wolf Subbasin GSA and GSP (posted on website www.whitewolfgsa.org).

Requests for Information/Easements/Planning Notices

- Water supply
- Water costs
- Historical groundwater levels
- Monitoring well conversions
- Water quality
- Land use data
- Easements and/or right-of-way encroachments
- Reviewed/responded to multiple planning notices
- Reviewed/responded to environmental documents as necessary
- Responded to As Built Requests

Power Related Activities

- Revised power purchase agreements with White Pine Renewables for a total of 10 MW solar production.
- Managed Electrical Distribution Expansion Study process.
- Reviewed Renewable Portfolio Standards balances.
- Coordinated planned PG&E outages, meter repairs and reviewed Trimark and RBI invoices.
- Performed weekly load forecast reviews.
- Reported on PWRPA power accounting.
- Reviewed PWRPA monthly invoices for billing anomalies/meter reconciliations.
- Reviewed power reconciliation reporting tool.
- Worked on On-Farm Solar RECS agreements and reporting.
- Maintained Wells First Off List (efficiency rating).
- Performed Load forecast updates and rate analysis.
- Coordinated with PG&E on meter inventory information.
- Coordinated new power service design and construction projects.
- Coordinated monthly landowner Groundwater meter reads, repairs and prepared reports.

SPREADING WORKS OPERATIONS (WELLFIELDS AND BASINS)

- Exhibit “F” summarizes wellfield production to date.
- Exhibit “G-1” summarizes gross direct spreading to date.
- Exhibits “H-1” and “H-2” summarize current static and/or pumping water in table and graphic forms.

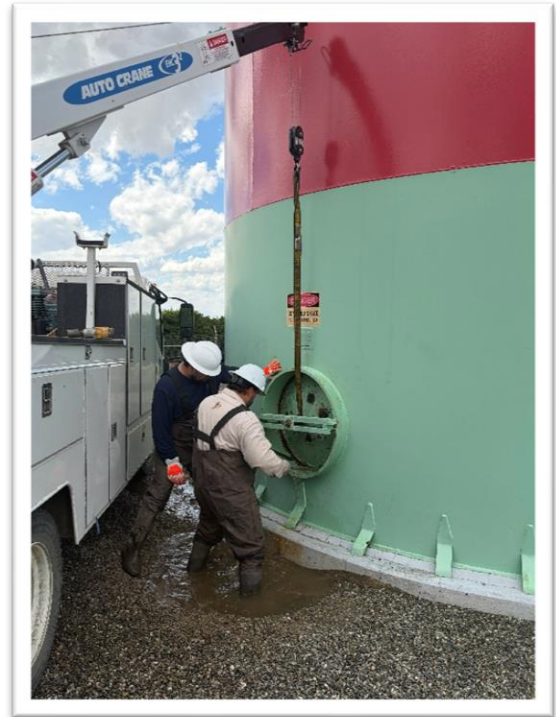
Well Repair Status Report

Well Number	Year Built	Age (Years)	Cased Depth (ft)	Previous Well Condition Rating	Current Status	Problem	Notes/Discussion
Sycamore 13	1967	59	840	Acceptable	Permanently Out of Service	Apparent Pump Failure	<ul style="list-style-type: none"> o Well needs to be abandoned in some manner after pump was not able to pulled from well. o The pump would not come free and the column/tube/shaft ultimately separated 220' down. o I recommend we install a locking cap on the well head and leave it as is.

OPERATIONS DEPARTMENT ACTIVITIES

Routine Activities

- Operated District's water distribution and delivery systems (canal, reservoirs and wells).
- Conducted monthly safety meetings.
- Performed monthly meter reads at Turnouts and Pump Plants (water and power).
- Maintained weed control at Pump Plants, Turnouts, Air-Vents, and Isolation Valves.
- Monitored Forrest Frick Pumping Plant operations and Intake Canal water levels.
- Inspected control systems at Pump Plants (Transducers, Cla-valves, etc.).
- Replaced burned out Pump Plant lights and panel bulbs.
- Monitored flows and levels at the Intake, North and South Canal.
- Applied warning labels on Turnouts.
- Daily wellfield readings.
- SGMA monthly well readings.
- Monthly safety meeting.



Retrieving Underwater Drone at Pump Plant N55-P7 after Inspection

Additional Activities

- Replaced locks and chains on various Intake gates.
- Continued fine tuning and upgrading WildEye remote monitoring of Turnout meters.
- Charged WildEye external batteries Districtwide.
- Closed and de-watered DiGiorgio line.
- Replaced Pump Plant N1-P1 pressure gauge on air vessel.
- Replaced a 10" butterfly valve at Turnout A-64.
- Re-Programmed Turnouts C-3, C-96, C-27, C-98 and M-21 meters.
- Replaced Turnouts C-40 and W-39 WildEye devices for warranty.
- Replaced air vent on Turnout E-35.
- Repaired vandalism on WildEye box at Turnout E-42.
- Replaced North well 20, Turnouts A-30 and M-38 meters.
- Replaced and re-programmed Turnout M-1 meter.
- Installed WildEye on Turnout M-6.
- Re-Configured Turnouts T-21, W-37, W-65, M-5 and M-38 WildEye devices.
- Checked isolation valves after 850 Intertie completion.

Underground Service Alert (USA) Report

- District initiated 0.
- Responded to 198 USA notices to locate District underground facilities.
 - 15 required markings of District facilities.
 - 93 were renewals.
 - 90 with no conflicts.

Power Outages and/or Interruptions Involving the Following Systems

Power Interruptions													
FFPP		BR		S32		S68		S88		OFFICE	1	SYC	1
N1		N41		S38		S73	1	S93		INTERTIE		TEJON	
N8		N55	1	S64		S78		EOC		NC		CVC	

Lateral Prorates

Prorated Laterals (days)											
N1	0	N8	0	N24	0	N41	1	N55		7	
S32	0	S38	20	S64	4	S73	7	S88	0	S93	7

Facility Improvements (Repairs-R or New-N)

Meters-N		Valves-N	
A-30	North well 20	A-64	
T-29			

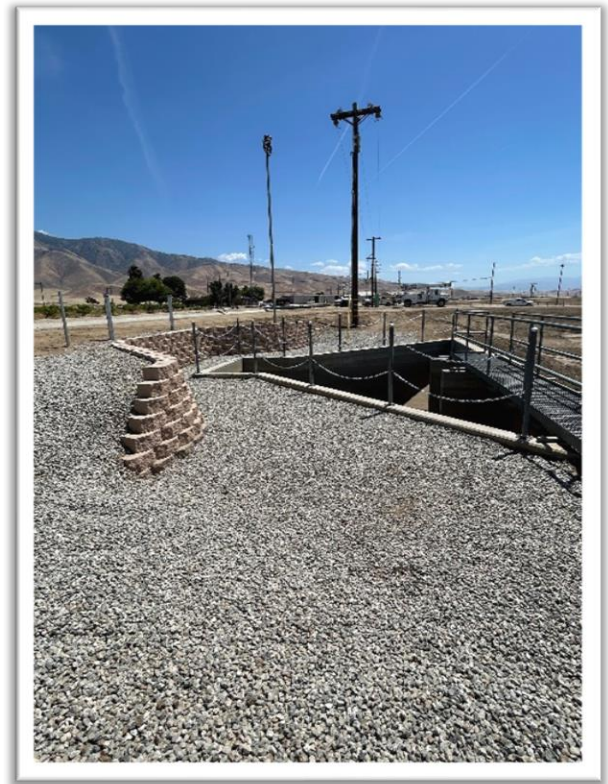
MAINTENANCE DEPARTMENT ACTIVITIES

Routine Activities

- Performed weekly yard duties at Headquarters.
- Cleared-out forebays at North and South Canal.
- Organized Maintenance Warehouse.
- Maintenance of the CIMIS Station.

Additional Activities

- Assisted the Bakersfield office with furniture relocation and setup.
- Replaced the Grader 772 GP bottom blade.
- Replaced doorknobs on N1 lateral MCC buildings.
- Replaced signs at the North Canal gates.
- Serviced the HVAC system at Headquarters.
- Installed retaining wall at Sycamore Spreading Works.
- Mowed and bladed at Sycamore Spreading Works.
- Removed tumbleweeds at Tejon Spreading Works.
- Repaired a pinhole leak on Turnout W-37.
- Repaired a pinhole leak on Turnout T-47.
- Painted structure callouts at Tejon Spreading Works.
- Performed cleanup and removal of bins at the El Paso property.



Installation of Retaining Wall at Sycamore Spreading Works



Building Demolition and Debris Removal at El Paso Property



Debris Removal at El Paso Property

Mechanic's Shop Repair Activities

- Weekly inspection on gas tank and pump.
- Fixed hydraulic leak on Schulte mower.
- Installed new tire on dump trailer.
- Fixed water leak on water truck.
- Repaired rear tires on Backhoe 410E.

Part	Repair/Replaced	Part	Repair/Replaced
Routine Service	8	A/C Service/Heater	4
Brakes	4	Belts	2
Tires	10	Headlights/Taillights	0/2
Tire Repairs	6	Shocks	0
Rotors/Drums /Wheel Bearings	0/0	Wiper Blades/Engine Washes	6/2
Batteries	2	Cabin Filter	4
Fuel Filters	4	Trailer Lights/Spotlights	2/1
Tune-ups	2	Cleaned Throttle Body	2
Clean TPS Sensor	2	Misc.	3

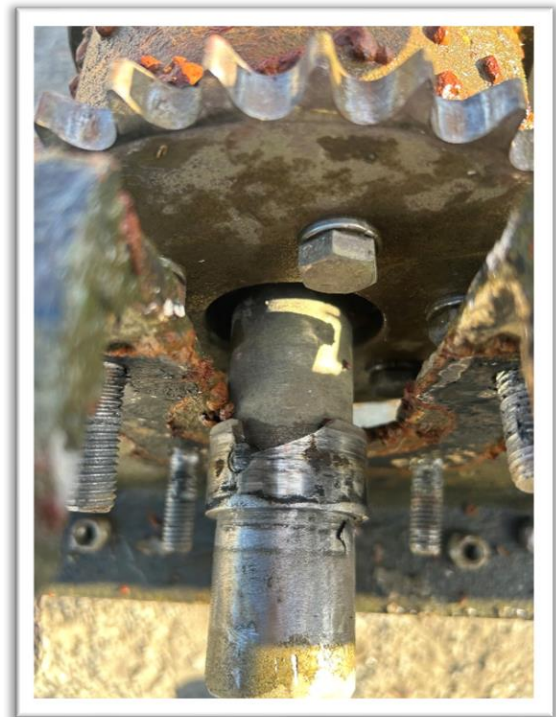
PUMP DEPARTMENT ACTIVITIES

Routine Pump Maintenance Activities

- Replaced various pump packings.
- Lubricated pump bearings at various Pumping Plants.
- Maintained drip oil on District Wells.
- Inspected and maintained Air Compressors.
- Inspected and/or adjusted Traveling Water Screens/Moss Screens.
- Cleaned out or replaced Yardney filter for the Moss Screens sprayer pumps.

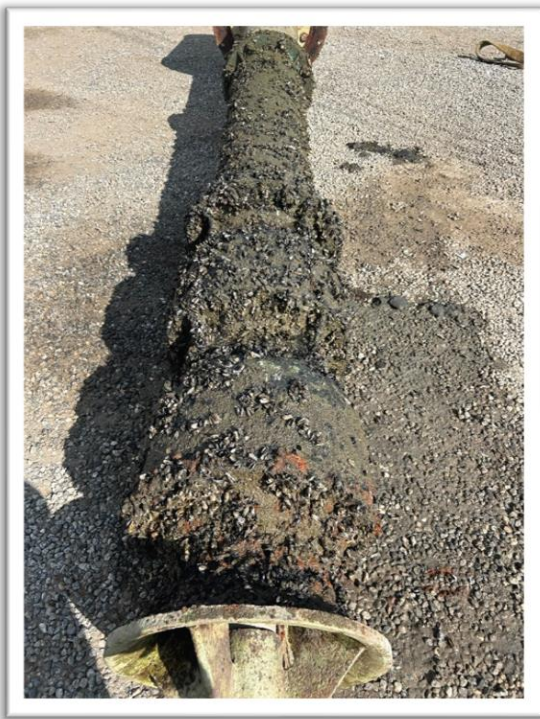
Additional Activities

- Inspected the head pressure on all Pump Plants Districtwide.
- Installed a new 3" air valve at Sycamore Well #6 and performed well start-up.
- Replaced a bad 300 HP motor at Sycamore Well #20.



**Repaired Moss Screen Broken Shaft
at Pump Plant S38-P1**

- Installed a new site tube for the oil dripper reservoir at Tejon Well #80.
- Redirected the flush lines at Pump Plant N41-P1.
- Replaced 12" check valve spring at Pump Plants N55-P1 unit #7 and S64-P2 unit #3.
- Changed the 3" inline check valve for the sprayer pumps at Pump Plants N55-P1, S73-P1 and S88-P1.
- Repaired the broken shaft for the Moss Screen at Pump Plant S38-P1.
- Replaced an O-ring for a 16" check valve at Pump Plant S38-P1 unit #2.
- Replaced a 16" check valve at Pump Plant S38-P2 unit #2.
- Replaced a 10 CFS vertical pump at Pump Plant S64-P1 unit #3.
- Repaired a broken 2" suction line for the sump pump at Pump Plant S64-P3.
- Repaired the sump pump at Pump Plant S93-P1.
- Replaced a 1" hose for the sump pump at Pump Plant S93-P3.
- Replaced the rotating element of 10 CFS pumps at Pump Plant N8-P2 unit #1 and N55-P2 unit #1.
- Replaced the rotating element of 5 CFS pumps at Pump Plants N55-P7 unit #2 and N55-P9 unit #2.



***Pulled Vertical Pump
Showing Dead Mussels***



Oversaw N24 and N26 Well Startups

PUMP & MOTOR REPAIR SUMMARY

	Pumping Plant/Wells	Unit	Size	Time/Hours	Reason
Vertical Pumps	S64-P1	3	10 CFS	13645.1	Bushing Bad/Vibrations
Vertical Motors	Sycamore	20	300 HP	N/A	Bad Thrust Bearing
Horizontal Pumps	N55-P9	2	5 CFS	22621.3	Bad Bearings and Sleeves
	S73-P3	2	10 CFS	0116.3	Bad Bearings
	N8-P2	1	1 CFS	06953.9	Broken Shaft
	N55-P7	2	5 CFS	17776.2	Bad Bearings
	N55-P2	1	10 CFS	65304.1	Bad Sleeves
Horizontal Motors					

CONTROLS DEPARTMENT ACTIVITIES

Routine Activities

- Processed monthly purchase orders.
- Performed electrical maintenance and repairs.
- Monthly inventory.

Distribution System Improvements (Repairs-R or New-N)							
Starter Controls	Contactors / Soft Start	Aux. Contact Block	Motor Control Panels	Battery Back-up Units	Circuit Breakers	Hour meters	Trip Units
	N – S38-P1 unit #2 – replaced motor starter contactors	N – S92-P1 unit #1 – replaced H-O-A normally open contact blocks	N – N55-P1 unit #2 – replaced motor starter resistor		R -- S73-P3 unit #3 – repaired circuit breaker	N – S38-P1 unit #2 – replaced hour meter	
		N – S38-P1 unit #2 – replaced motor starter contact blocks				N – S73-P1 unit #4 – replaced hour meter	
						N – N55-P1 unit #6 – replaced hour meter	
						N – S73-P3 unit #4 – replaced hour meter	

						N – N64-P1 unit #3 – replaced hour meter	
						N – N55-P1 unit #3 – replaced hour meter	
						N – N55-P2 unit #6 – replaced hour meter	
						N – S68-P1 unit #2 – replaced hour meter	
						N – S73-P3 unit #3 – replaced hour meter	

Distribution System Improvements (Repairs-R or New-N)							
Radios	PLC's or Contro l Mods.	Photocell / Lights	Wiring	Valve Controllers or Limitorque	Coils	Relays / Thermal O/L	Fuses / Transducers
			N – N55-P1 compressor #2 – replaced starter coil and contact blocks	N – FFPP unit #8 – replaced burnt control wiring & blown fuse on EIM		N – S73-P2 unit #2 – replaced machine tool relay	N – S38-P2 – replaced stand tank pressure transducer
			N – S93-P1 – ran new underground control wiring for the outside LED flood lights			N – N41-P1 moss screen – replaced thermal overload relay	
			N – N55-P9 – replaced station breaker voltmeter			N – N8-P3 unit #3 – replaced machine tool relay	

Well Facility Improvements (Repairs-R or New-N)							
Transformers (number)	Thermal Overloads	Lightning Arrestor	Panel wiring / Circuit Breaker /Cont	Soft Start Equipment	Control Fuses	Relays / Switches	12KV Fuses
N – Sycamore Well #23 – replaced fuse cutouts & cross arm. Adjusted the transformer voltage tap setting			N – Sycamore Well #26 – replaced circuit breaker				N – Sycamore Well #6 – replaced queen power pole, span guy pole, fuse cutouts, cross arm & timber
N – Sycamore Well #12, #14 & #25 – replaced new guy guards			N – Tejon Well #88 – pulled new underground motor cable				
N – Sycamore Well #6 & #29 – replaced 12kv cross arm vis-strips			N – Tejon Well #76 – pulled new underground motor cable				
N – Sycamore Well #1 & #15 – replaced combo cutouts & primary bussing			N – Sycamore Well #12, #15 & #16 – replaced motor leads flex conduit.				
N – Tejon Well #89 – change out inline 12kv power pole							

Additional Activities

- Oversaw the fire protective equipment installation and scheduled three-day (3) shutdowns at Forrest Frick Pumping Plant.
- Assisted contractor to automate the LIM injection pump for water treatment.
- Oversaw and assisted contractors with the startup of North Canal Spreading Works Well #24 and #26.
- Oversaw contractor on the 12kv line repair work order for Sycamore and Tejon Spreading Works.
- Worked at Forrest Frick Pumping Plant unit #2 annunciator panel and alarms with contractor. Troubleshoot the panel telemetry control circuit and found a bad circuit board. Disconnected the bad circuit board and burnt 24vdc fuse. Troubleshoot unit #7 and unit #8 unwanted shutdown. Also, found and replaced bad control relays on unit #7 and unit #8.
- Assisted contractor at Pump Plant N24-P1 for maintenance shutdown.
- Created and edited master SCADA remote monitoring.

FORREST FRICK PUMPING PLANT

- 5,531 AF of water was pumped during the month.

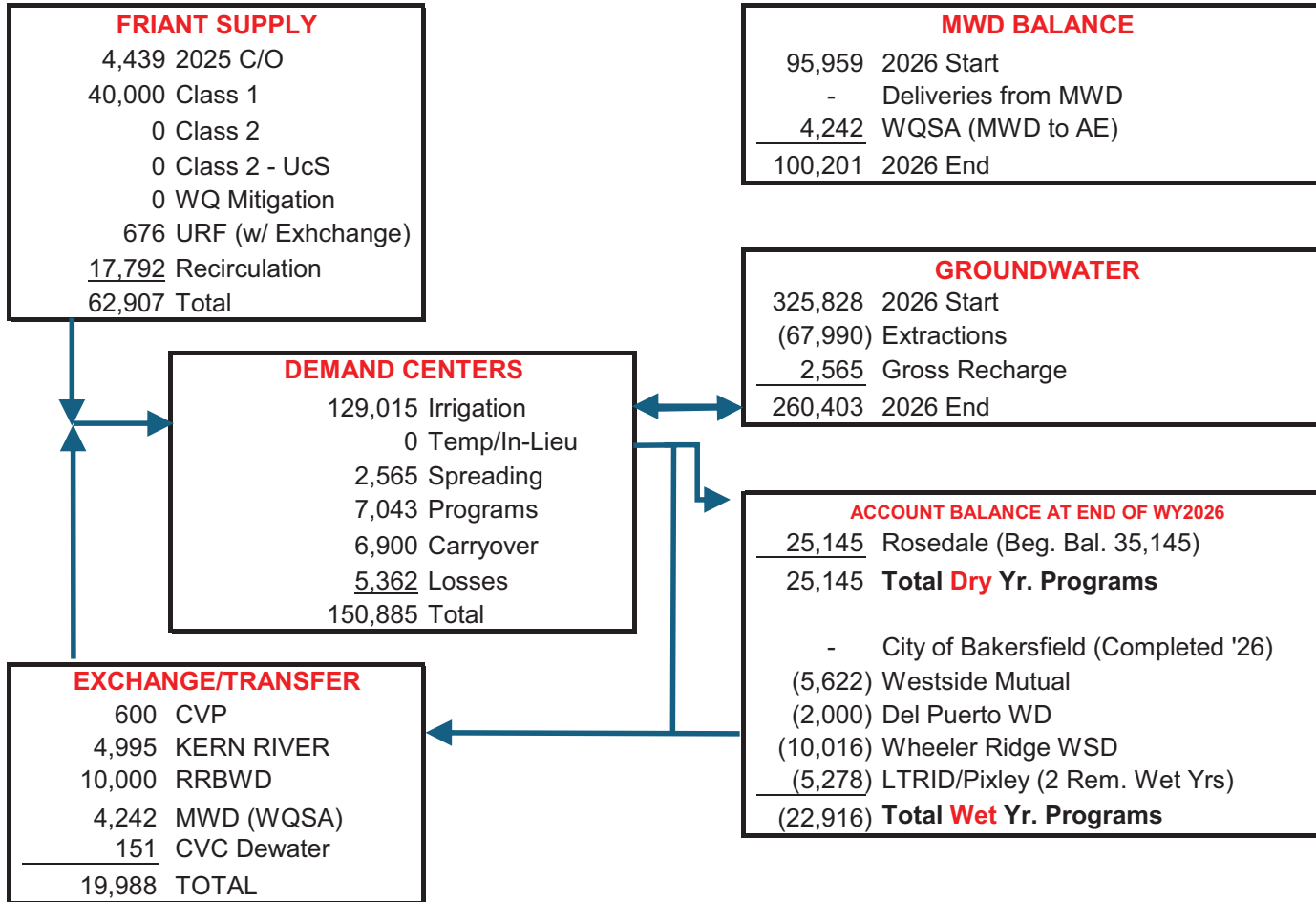
HOWARD FRICK PUMPING PLANT (AQUEDUCT INTERTIE)

- 0 AF was delivered to the District from the CA Aqueduct through the Howard Frick Pumping Plant/Pipeline and 0 AF was returned.

EXHIBIT "A-1"
ARVIN-EDISON WATER STORAGE DISTRICT
2026 WATER SUPPLY AND DEMAND

<u>SUPPLY</u>	<u>AF</u>	<u>%</u>
FRIANT-KERN (F-K)		
40,000 AF CLASS 1 (100%)	40,000	
URF TIER 1 BLOCK A (0.2% CLASS 2)	530	
CARRYOVER OF 2025 WATER	4,439	
SUBTOTAL	44,969	
CHOWCHILLA WSD EXCHANGE (URF/CLASS 1)	728	
LOWER TULE ID & PIXLEY ID	-2,640	
CHOWCHILLA WSD EXCHANGE (URF/CLASS 1)	-582	
FRESNO COUNTY	-550	
SUBTOTAL	-3,044	
TOTAL F-K	41,925	29.2%
CROSS VALLEY CANAL (CVC)		
SJRPP RECAPTURE RECIRCULATION	13,103	
ROSEDALE WSD	10,000	
METROPOLITAN WD (WQSA)	3,150	
FRESNO COUNTY (20% CVP)	600	
DEWATER CANAL	151	
DROUGHT POOL PROGRAM	-168	
SLR 1% EVAPORATION & LOSSES	-255	
TOTAL CVC	26,581	18.5%
SJRPP (RECAPTURED WATER)		
MADERA IRRIGATION DISTRICT	4,689	
DEL PUERTO WATER STORAGE DISTRICT	-3,685	
	1,004	0.7%
INTERTIE PIPELINE (IPL)		
METROPOLITAN WD (WQSA)	1,092	
TOTAL IPL	1,092	0.8%
KERN RIVER		
CITY OF BAKERSFIELD	4,995	
TOTAL KERN RIVER	4,995	3.5%
TOTAL IMPORT	75,597	52.6%
GROUNDWATER PUMPING		
IRRIGATION DEMAND	67,990	
TOTAL PUMPING	67,990	47.4%
<u>TOTAL WATER SUPPLY</u>	143,587	100.0%
DEMAND		
IRRIGATION DEMAND (MARCH -APRIL '26)	24,015	16.7%
IRRIGATION DEMAND (MAY- FEBRUARY '27)	105,000	73.1%
SPREADING (MARCH - APRIL '26)	2,565	1.8%
SPREADING (MAY-FEBRUARY '27)	0	0.0%
USBR CARRYOVER TO 2027	6,900	4.8%
SJRRP CARRYOVER TO 2026	0	0.0%
LOSSES/METERING INACCURACIES	5,107	3.6%
<u>TOTAL DEMAND</u>	143,587	100.0%

Exhibit "A-2"
 ARVIN-EDISON WATER STORAGE DISTRICT
2026 WATER MANAGEMENT



Surface Water	61,025	47%
Groundwater (42% of Max)	67,990	53%

EXHIBIT B-2 ARVIN-EDISON WATER STORAGE DISTRICT HISTORIC APRIL DELIVERIES BY YEAR

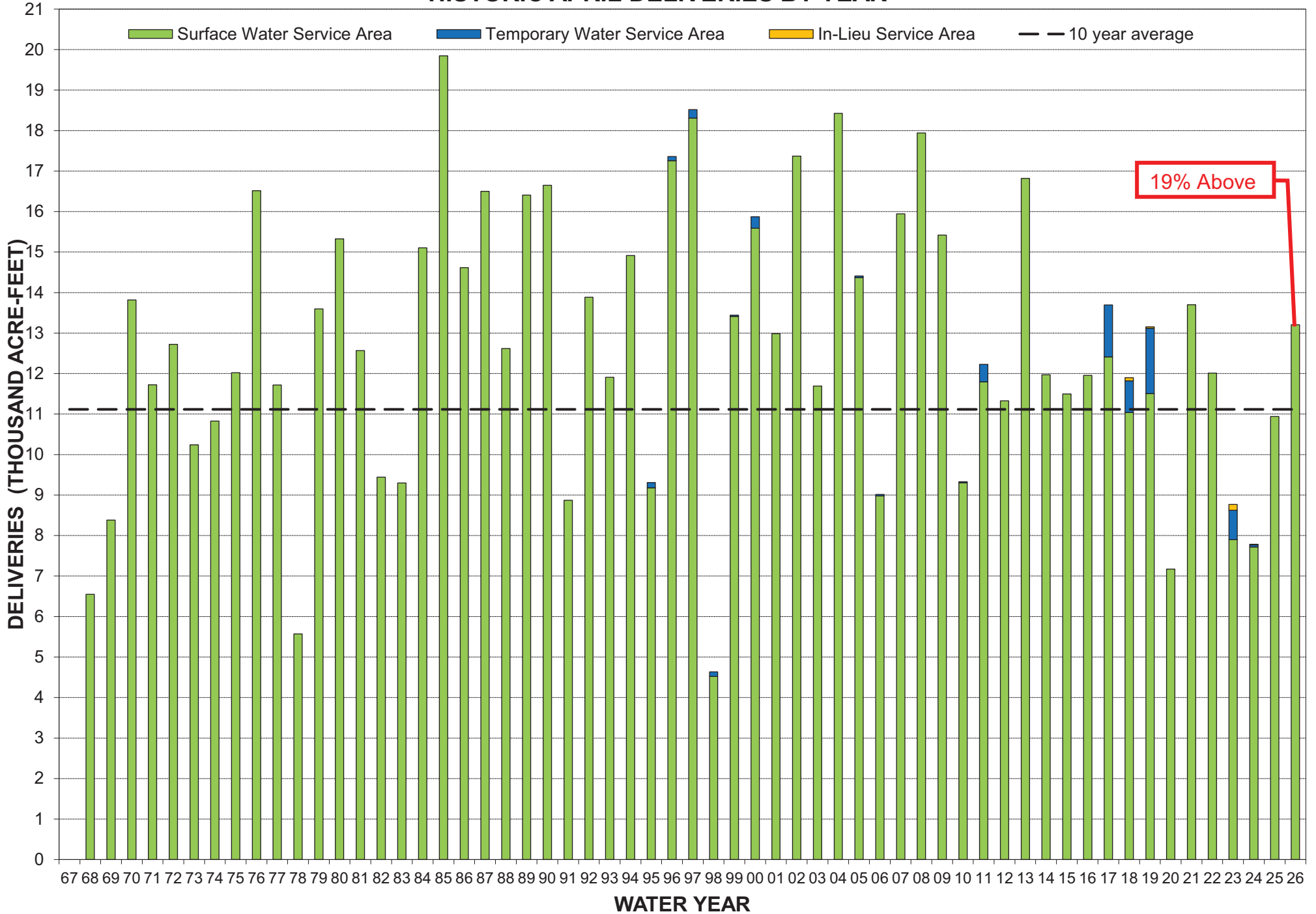


EXHIBIT B-3
ARVIN-EDISON WATER STORAGE DISTRICT
HISTORIC APRIL DELIVERIES BY MAGNITUDE

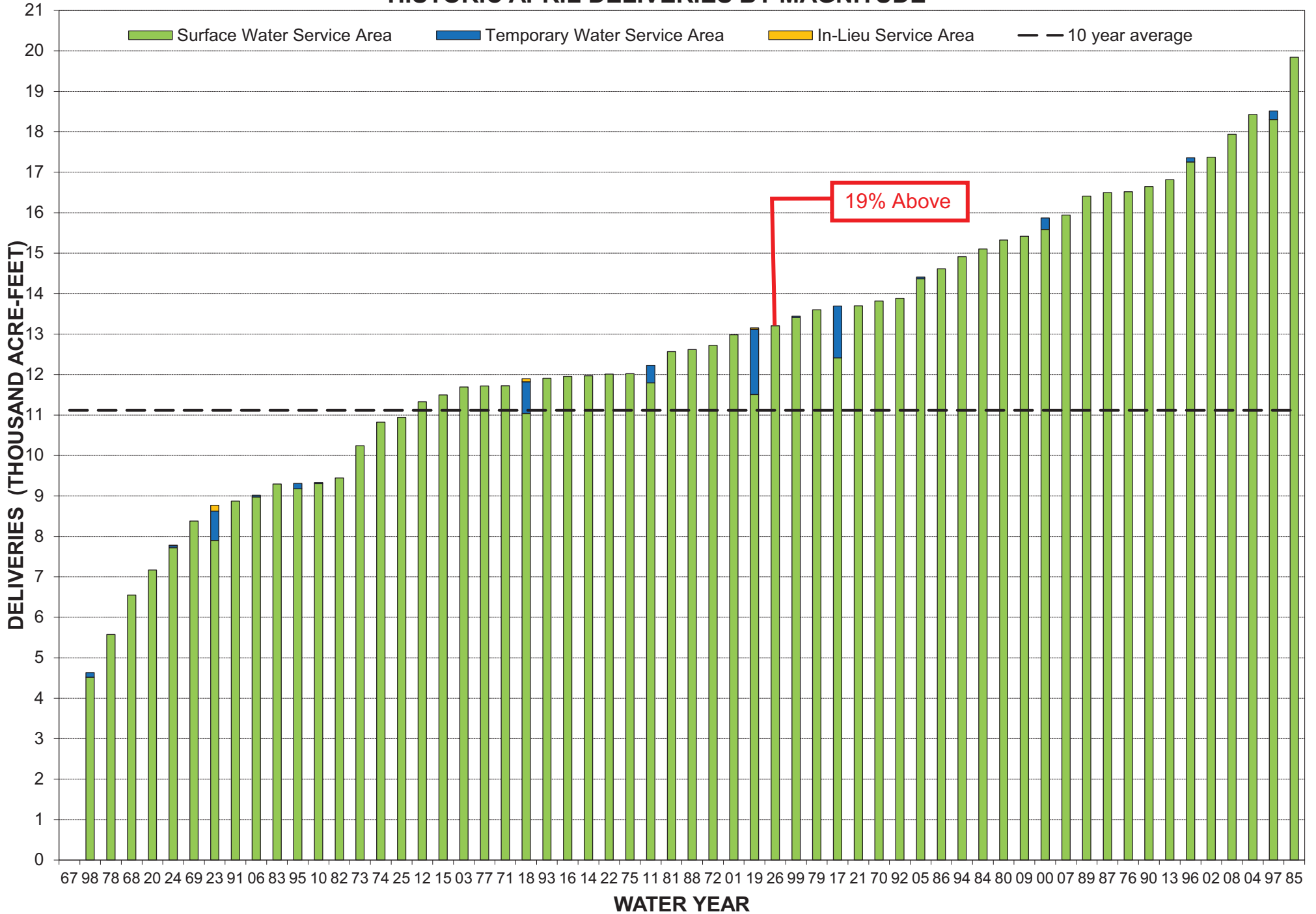


EXHIBIT "C1"
ARVIN-EDISON WATER STORAGE DISTRICT
WATER SUPPLY WATER QUALITY SUMMARY

	Date	Flow cfs	Import Source	Calcium		Magnesium		Sodium		Bicarbonate		Chloride		Nitrate		TDS mg/l	pH	EC umhos/cm	Hardness mg/l	SAR	Gypsum lbs/AF	Boron mg/l	Turbidity NTU
				mg/l	me/l	mg/l	me/l	mg/l	me/l	mg/l	me/l	mg/l	me/l	mg/l	me/l								
Intake Canal	04/06/26	50	FKC (100%)	3.7	0.2	0.7	0.1	4.2	0.2	17	0.3	2.7	0.1	ND	ND	48	6.7	46	12	0.2	0.0	ND	1.3
	03/04/26	210	FKC (100%)	18.0	0.9	9.2	0.8	31.0	1.3	66	1.1	35.0	1.0	3.3	0.05	210	7.6	310	83	1.3	0.1	120.00	19.5
	02/05/26	75	FKC (100%)	3.3	0.2	0.6	0.1	3.6	0.2	16	0.3	1.9	0.1	-	-	29	6.7	40	11	0.2	0.0	ND	4.5
	01/06/26	350	FKC (100%)	4.0	0.2	0.8	0.1	3.3	0.1	14	0.2	1.8	0.1	ND	ND	34	6.8	43	13	0.2	0.0	ND	39.0
	12/08/25	0	DOWN FOR MAINTENANCE/RESIDUAL	20.0	1.0	14.0	1.1	82.0	3.5	73	1.2	130.0	3.7	ND	ND	340	7.7	650	110	3.1	0.3	ND	4.7
	11/13/25	0	WELLS(100%)	14.0	0.7	4.0	0.3	22.0	0.9	58	1.0	17.0	0.5	ND	ND	130	7.9	200	51	1.0	0.1	100.00	9.1
	10/02/25	125	FKC (100%)	16.0	0.8	12.0	1.0	55.0	2.4	81	1.3	88.0	2.5	ND	ND	230	8.0	460	92	2.3	0.2	ND	2.6
	09/11/25	125	FKC (60%)/CVC (40%)	14.0	0.7	8.9	0.7	32.0	1.4	67	1.1	49.0	1.4	ND	ND	170	7.7	290	71	6.4	0.2	ND	3.4
	08/05/25	226	FKC (55%)/CVC (45%)	13.0	0.7	7.7	0.6	26.0	1.1	58	1.0	31.0	0.9	ND	ND	160	7.6	240	64	6.4	0.1	ND	4.6
	07/09/25	251	FKC (60%)/CVC (40%)	20.0	1.0	12.0	1.0	45.0	1.9	64	1.0	57.0	1.6	ND	ND	240	8.6	410	99	4.0	N/A	110.00	4.5
	06/17/25	201	FKC (50%)/CVC (50%)	17.0	0.9	9.9	0.8	33.0	1.4	70	1.1	41.0	1.2	ND	ND	190	8.1	340	84	5.0	0.1	110.00	5.1
	05/01/25	100	FKC (100%)	10.0	0.5	5.0	0.4	18.0	0.8	45.0	0.7	22.0	0.6	ND	ND	120.0	7.9	190.0	46.0	7.0	0.1	ND	6.6
	04/10/25	300	FKC (100%)	4.3	0.2	0.8	0.1	4.2	0.2	20.0	0.3	2.8	0.1	ND	ND	53.0	6.9	51.0	14.0	4.0	0.1	ND	28.2
	03/04/25	0	WELLS(100%)	19.0	1.0	9.6	0.8	34.0	1.5	58.0	1.0	38.0	1.1	ND	ND	290.0	9.2	340.0	88.0	4.4	0.1	110.0	13.0
	Average			12.6	0.6	6.8	0.6	28.1	1.2	50.5	0.8	36.9	1.0	3.3	0.1	160.3	7.7	257.9	59.9	3.3	0.1	110.0	10.4
North Canal	04/06/26	106	FKC (27%)/WELLS(73%)	20.0	1.0	3.7	0.3	51.0	2.2	99.0	1.6	25.0	0.7	17.0	0.3	240.0	8.2	360.0	64.0	2.6	0.3	430.0	1.1
	03/04/26	120	FKC (100%)	18.0	0.9	9.2	0.8	32.0	1.4	70.0	1.1	35.0	1.0	2.4	0.0	200.0	7.6	320.0	84.0	1.3	0.1	140.0	9.9
	02/05/26	48	FKC (100%)	3.9	0.2	0.6	0.1	3.7	0.2	19.0	0.3	2.1	0.1	-	-	33.0	6.7	46.0	12.0	0.2	0.0	ND	7.1
	01/06/26	82	FKC (100%)	5.3	0.3	0.7	0.1	2.8	0.1	22.0	0.4	1.6	0.0	ND	ND	35.0	7.9	47.0	16.0	0.2	0.0	ND	30.0
	12/08/25	0	DOWN FOR MAINTENANCE/RESIDUAL	31.0	1.6	6.0	0.5	68.0	2.9	130.0	2.1	37.0	1.0	12.0	0.2	330.0	8.1	520.0	100.0	3.0	0.4	660.0	5.1
	11/13/25	38	WELLS(100%)	20.0	1.0	3.8	0.3	50.0	2.2	100.0	1.6	22.0	0.6	11.0	0.2	220.0	8.3	340.0	66.0	2.5	0.3	360.0	2.3
	10/02/25	80	FKC (56%)/WELLS(44%)	23.0	1.2	6.6	0.5	59.0	2.5	97.0	1.6	42.0	1.2	11.0	0.2	240.0	7.6	420.0	85.0	2.6	0.2	400.0	3.6
	09/11/25	86	FKC (34%)/CVC (23%)/WELLS(44%)	21.0	1.1	5.7	0.5	45.0	1.9	92.0	1.5	30.0	0.8	6.5	0.1	240.0	8.4	340.0	75.0	8.1	0.3	320.0	3.5
	08/05/25	40	FKC (38%)/CVC (31%)/WELLS(31%)	24.0	1.2	6.1	0.5	47.0	2.0	95.0	1.6	28.0	0.8	6.5	0.1	230.0	7.2	360.0	85.0	4.6	0.3	330.0	3.3
	07/09/25	40	FKC (44%)/CVC (29%)/WELLS(27%)	24.0	1.2	7.9	0.6	52.0	2.2	87.0	1.4	39.0	1.1	6.9	0.1	240.0	8.4	410.0	92.0	4.1	N/A	340.0	5.1
	06/17/25	106	FKC (30%)/CVC (30%)/WELLS(40%)	33.0	1.7	9.8	0.8	48.0	2.1	100.0	1.6	37.0	1.0	11.0	0.2	290.0	8.3	470.0	120.0	0.7	0.2	330.0	4.9
	05/01/25	82	FKC (46%)/WELLS(54%)	29.0	1.5	8.4	0.7	52.0	2.2	97.0	1.6	41.0	1.2	7.8	0.1	270.0	8.4	460.0	110.0	1.9	0.3	390.0	6.3
	04/10/25	148	FKC (98%)/WELLS(2%)	6.4	0.3	1.0	0.1	5.8	0.3	26.0	0.4	3.4	0.1	ND	ND	32.0	7.2	71.0	20.0	4.4	0.1	ND	13.9
	03/04/25	28	WELLS(100%)	19.0	1.0	4.0	0.3	39.0	1.7	87.0	1.4	20.0	0.6	7.9	0.1	260.0	8.4	320.0	64.0	7.1	0.3	210.0	3.7
	Average			19.8	1.0	5.3	0.4	39.7	1.7	80.1	1.3	25.9	0.7	9.1	0.1	204.3	7.9	320.3	70.9	3.1	0.2	355.5	7.1
South Canal	04/06/26	70	FKC (25%)/WELLS(75%)	18.0	0.9	4.1	0.3	37.0	1.6	69.0	1.1	19.0	0.5	11.0	0.2	190.0	9.0	290.0	62.0	1.7	0.2	270.0	1.5
	03/04/26	112	FKC (100%)	19.0	1.0	9.1	0.7	31.0	1.3	66.0	1.1	34.0	1.0	2.0	0.0	200.0	7.7	320.0	84.0	1.3	0.1	130.0	13.2
	02/05/26	30	FKC (100%)	4.2	0.2	0.7	0.1	3.7	0.2	20.0	0.3	2.1	0.1	-	-	34.0	6.7	46.0	13.0	0.2	0.1	ND	4.7
	01/06/26	10	FKC (100%)	6.2	0.3	0.8	0.1	3.0	0.1	27.0	0.4	1.5	0.0	ND	ND	41.0	7.1	53.0	19.0	0.2	0.0	ND	43.0
	12/08/25	0	DOWN FOR MAINTENANCE/RESIDUAL	19.0	1.0	3.5	0.3	39.0	1.7	95.0	1.6	18.0	0.5	4.4	0.1	180.0	7.8	310.0	63.0	2.0	0.3	270.0	9.8
	11/13/25	6	WELLS(100%)	18.0	0.9	3.6	0.3	51.0	2.2	84.0	1.4	23.0	0.6	13.0	0.2	230.0	8.8	340.0	59.0	2.5	0.3	340.0	7.3
	10/02/25	50	FKC (54%)/WELLS(46%)	27.0	1.4	7.5	0.6	50.0	2.2	93.0	1.5	36.0	1.0	6.7	0.1	220.0	8.0	390.0	97.0	2.1	0.3	290.0	2.2
	09/11/25	20	FKC (32%)/CVC (22%)/WELLS(46%)	23.0	1.2	6.6	0.5	42.0	1.8	98.0	1.6	30.0	0.8	5.9	0.1	230.0	7.6	340.0	85.0	4.4	0.3	250.0	2.4
	08/05/25	24	FKC (37%)/CVC (30%)/WELLS(33%)	26.0	1.3	8.3	0.7	45.0	1.9	100.0	1.6	36.0	1.0	5.8	0.1	250.0	8.3	400.0	99.0	2.9	0.2	210.0	2.9
	07/09/25	134	FKC (42%)/CVC (29%)/WELLS(29%)	25.0	1.3	8.0	0.7	45.0	1.9	100.0	1.6	33.0	0.9	5.9	0.1	220.0	8.3	380.0	96.0	3.2	N/A	250.0	3.3
	06/17/25	274	FKC (27.7%)/CVC (27.7%)/WELLS(44.6%)	29.0	1.5	7.3	0.6	51.0	2.2	110.0	1.8	33.0	0.9	7.4	0.1	270.0	8.1	440.0	100.0	1.8	0.3	380.0	3.1
	05/01/25	70	FKC (42%)/WELLS(58%)	26.0	1.3	7.2	0.6	49.0	2.1	96.0	1.6	33.0	0.9	13.0	0.2	240.0	8.2	420.0	95.0	3.4	0.3	400.0	2.8
	04/10/25	130	FKC (98%)/WELLS(2%)	7.0	0.4	1.1	0.1	5.9	0.3	27.0	0.4	3.4	0.1	ND	ND	32.0	7.0	75.0	22.0	4.3	0.1	ND	15.9
	03/04/25	16	WELLS(100%)	20.0	1.0	5.0	0.4	44.0	1.9	88.0	1.4	25.0	0.7	6.4	0.1	180.0	8.7	350.0	71.0	6.1	0.3	290.0	7.5
	Average			19.1	1.0	5.2	0.4	35.5	1.5	76.6	1.3	23.4	0.7	7.4	0.1	179.8	8.0	296.7	68.9	2.6	0.2	280.0	8.5

EXHIBIT "C1"
ARVIN-EDISON WATER STORAGE DISTRICT
WATER SUPPLY WATER QUALITY SUMMARY

	Date	Flow cfs	Import Source	Calcium		Magnesium		Sodium		Bicarbonate		Chloride		Nitrate		TDS mg/l	pH	EC umhos/cm	Hardness mg/l	SAR	Gypsum lbs/AF	Boron mg/l	Turbidity NTU
				mg/l	me/l	mg/l	me/l	mg/l	me/l	mg/l	me/l	mg/l	me/l	mg/l	me/l								
Intertie Pipeline	04/06/26	20	FKC (23%)/WELLS(68%)/SPILLWAY(9%)	21.0	1.1	4.7	0.4	34.0	1.5	75	1.2	19.0	0.5	12.0	0.2	200	8.7	300	72	1.5	0.2	250.00	1.6
	03/04/26	140	FKC (64%)/AQUEDUCT(34%)/SPILLWAY(6%)	18.0	0.9	9.3	0.8	32.0	1.4	67	1.1	36.0	1.0	3.1	0.1	210	7.6	320	83	1.3	0.1	130.00	16.4
	02/05/26	20	FKC (100%)	4.5	0.2	0.6	0.1	3.7	0.2	20	0.3	2.3	0.1	-	-	33	6.8	47	14	0.2	0.0	ND	5.5
	01/06/26	0	FKC (100%)	26.0	1.3	11.0	0.9	63.0	2.7	91	1.5	84.0	2.4	ND	ND	290	7.9	530	110	2.4	0.3	140.00	6.4
	12/08/25	0	DOWN FOR MAINTENANCE/RESIDUAL	21.0	1.1	12.0	1.0	66.0	2.8	75	1.2	92.0	2.6	ND	ND	290	7.9	550	100	2.6	0.3	120.00	5.7
	11/13/25	50	WELLS(50%)/AQUEDUCT(50%)	17.0	0.9	12.0	1.0	66.0	2.8	67	1.1	110.0	3.1	1.5	0.0	300	7.9	520	94	2.6	0.3	100.00	1.6
	10/02/25	35	FKC (47%)/WELLS(40%)/AQUEDUCT(13%)	18.0	0.9	9.1	0.7	47.0	2.0	67	1.1	58.0	1.6	ND	ND	210	9.1	390	83	1.9	0.2	160.00	16.0
	09/11/25	100	FKC (23%)/CVC (15%)/WELLS(32%)/AQUEDUCT(25%)/SPILLWAY(5%)	14.0	0.7	9.1	0.7	32.0	1.4	70	1.1	47.0	1.3	ND	ND	170	7.6	280	72	6.1	0.2	ND	4.0
	08/05/25	123	FKC (31%)/CVC (25%)/WELLS(28%)/AQUEDUCT(8%)/SPILLWAY (8%)	13.0	0.7	7.6	0.6	25.0	1.1	60	1.0	31.0	0.9	ND	ND	160	7.5	250	63	6.3	0.1	ND	5.5
	07/09/25	63	FKC (36%)/CVC (24%)/WELLS(25%)/AQUEDUCT(15%)	20.0	1.0	11.0	0.9	43.0	1.9	70	1.1	56.0	1.6	1.0	0.0	230	8.1	400	N/A	4.2	N/A	130.00	8.0
	06/17/25	40	FKC (27.7%)/CVC (27.7%)/WELLS(44.6%)	25.0	1.3	8.5	0.7	49.0	2.1	88	1.4	36.0	1.0	5.0	0.1	250	8.6	410	97	3.1	0.2	360.00	4.0
	05/01/25	40	FKC (36%)/WELLS(49%)/SPILLWAY(14%)	22.0	1.1	5.4	0.4	42.0	1.8	83.0	1.4	25.0	0.7	5.7	0.1	220.0	8.6	350.0	77.0	5.2	0.3	370.0	6.3
	04/10/25	0	FKC (98%)/WELLS(2%)	8.7	0.4	1.2	0.1	6.3	0.3	31.0	0.5	3.6	0.1	ND	ND	61.0	7.3	84.0	27.0	4.0	0.1	ND	12.4
	03/04/25	0	WELLS(100%)	24.0	1.2	7.3	0.6	41.0	1.8	87.0	1.4	29.0	0.8	5.1	0.1	280.0	8.6	370.0	90.0	3.9	0.2	210.0	13.2
		Average			18.0	0.9	7.8	0.6	39.3	1.7	67.9	1.1	44.9	1.3	4.8	0.1	207.4	8.0	342.9	75.5	3.2	0.2	197.0

Water Supply Water Quality Note: ¹ Positive flow rate is reverse flow into the District. Where the reported value is ND, the method detection limit is entered.

Water Supply Water Quality Note: ² Reverse flow into the District South Canal (Sycamore check gate was closed).

Water Supply Water Quality Note: ³ Constituent ran past sample hold time.

ND: NONE DETECTED.
 N/A: NOT AVAILABLE OR NOT TESTED.
 PR: PENDING RESULTS

mg/l: MILLIGRAMS PER LITER; SAME AS PARTS PER MILLION (ppm).
 me/l: MILLEQUIVALENTS PER LITER; SAME AS EQUIVALENTS PER

INTAKE: SAMPLE TAKEN AT COTTONWOOD RD. SOUTH OF PANAMA LANE.
 NORTH: SAMPLE TAKEN DOWNSTREAM OF SYCAMORE CHECK GATE.
 SOUTH: SAMPLE TAKEN DOWNSTREAM OF TEJON CHECK GATE.
 INTERTIE: TERMINUS OF SOUTH CANAL (S93 FOREBAY).

SODIUM: FOR SURFACE IRRIGATION: SAR < 3 IS GOOD. FOR SPRINKLER IRRIGATION: SODIUM < 3 me/l IS GOOD.

NITRATE: NITRATE IN WATER SLIGHTLY REDUCES FERTILIZER REQUIREMENT.

BICARBONATE: BICARBONATE < 1.5 me/l IS SATISFACTORY FOR OVERHEAD SPRINKLERS.

CHLORIDE: FOR SURFACE IRRIGATION CHLORIDE < 4 me/l IS GOOD.

TDS: TDS < 450 IS ACCEPTABLE FOR UNRESTRICTED USE.

GYPSUM: AMOUNT OF CALCIUM SULFATE IN POUNDS PER ACRE-FOOT OF WATER APPLIED. INCREASES WATER PERMEABILITY AND HELPS CORRECT EXCESS SODIUM. INCREASES CLAY FLOCCULATION FOR INCREASING PERMEABILITY.

pH: A MEASURE OF ACIDITY. A pH < 7 IS ACIDIC, pH = 7 IS NEUTRAL, pH > 7 IS BASIC. NORMAL RANGE IS 6.5 - 8.4. A pH > 8 MAY NEED TO BE BUFFERED FOR PESTICIDE APPLICATION. AFFECTS NUTRIENT AVAILABILITY.

EC: ELECTRICAL CONDUCTIVITY. A MEASURE OF WATER SALINITY; SOIL - IN MILLIMHOS PER CENTIMETER (mmho/cm); WATER - MORE OFTEN, IN MICROMHOS PER CENTIMETER (umhos/cm). EC < 700 (umhos/cm) HAS NO RESTRICTIONS FOR AGRICULTURAL USE. EC < 200 (umhos/cm) CAN REDUCE INFILTRATION RATE.

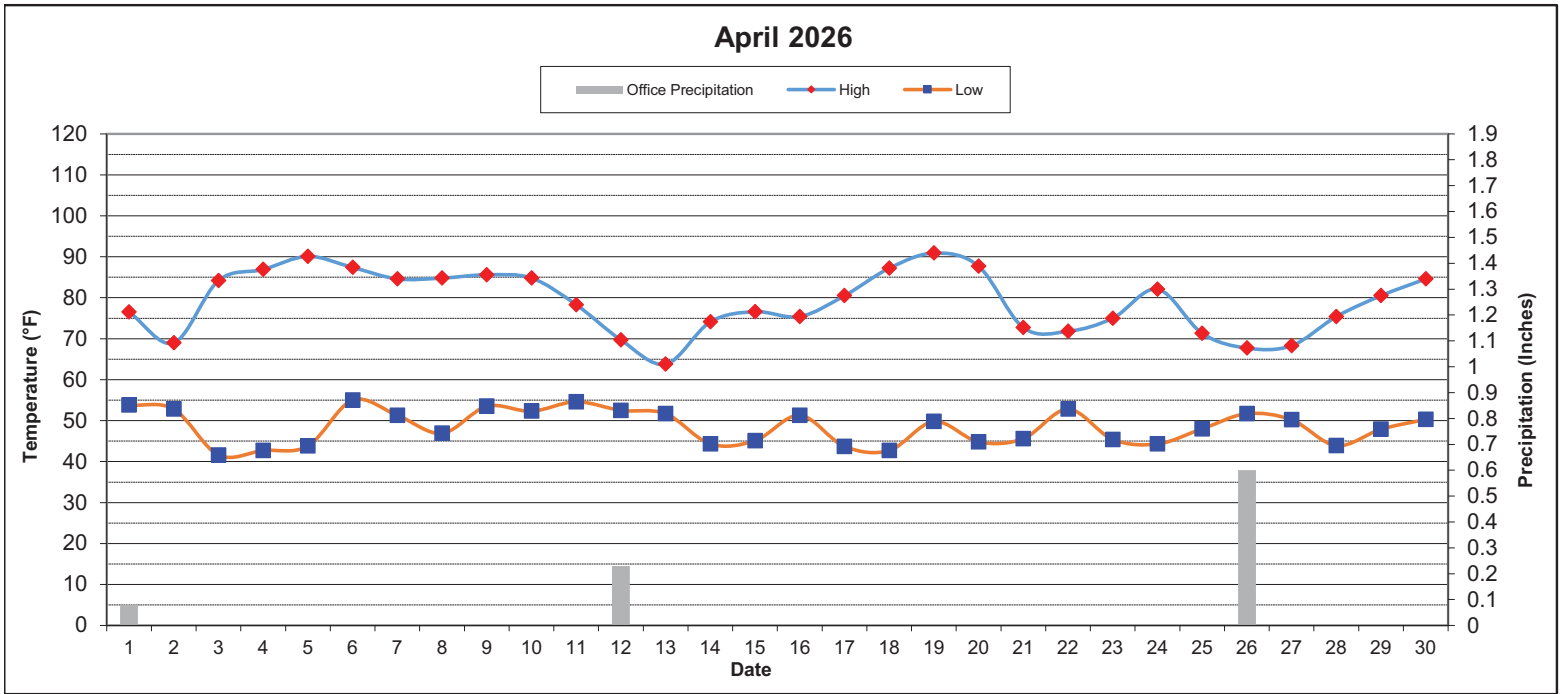
HARDNESS: HARD WATER, INDICATING CALCIUM AND MAGNESIUM, IS BENEFICIAL FOR AGRICULTURE.

SAR: SODIUM ADSORPTION RATIO. A RATIO OF SODIUM TO CALCIUM AND MAGNESIUM.

EVALUATE WITH EC.
 SAR = 0 - 3 AND EC > 400 ACCEPTABLE
 SAR = 3 - 6 AND EC > 900 ACCEPTABLE

BORON: BORON < 0.50 mg/l IS SATISFACTORY FOR ALL CROPS. EXCESSIVE BORON IS PHYTOTOXIC (BURNS) TO PLANTS.

EXHIBIT "D"
ARVIN-EDISON WATER STORAGE DISTRICT
SUMMARY OF CLIMATOLOGICAL OBSERVATIONS



PRECIPITATION	BAL RES (1)		OFFICE (2)		SYCAMORE (3)		TEJON (4)		INTERTIE (5)	
	INCHES	% AVG.	INCHES	% AVG.	INCHES	% AVG.	INCHES	% AVG.	INCHES	% AVG.
AVG. MONTHLY	0.58		0.83		0.82		0.69		0.74	
AVG. YEAR TO DATE	7.27		8.20		7.88		6.89		7.51	
CURRENT MONTH	0.66	114%	0.91	110%	0.54	66%	0.60	87%	0.55	74%
CUMULATIVE (07/01/25 - 06/30/26)	8.75	120%	9.86	120%	8.98	114%	8.02	116%	7.89	105%

TEMPERATURE (6)	(°F)	DATE	TIME
MAXIMUM TEMPERATURE	91	4/19/2026	4:00 PM
AVERAGE MAXIMUM TEMPERATURE	79		
# DAYS THIS MONTH ABOVE 100 °F	0		
MINIMUM TEMPERATURE	42	4/3/2026	4:00 AM
AVERAGE MINIMUM TEMPERATURE	49		
# DAYS THIS MONTH BELOW 32 °F	0		

WIND (6)	M.P.H.	DATE	TIME	DRCTN
MAXIMUM WIND SPEED	6.0	4/12/2026	6:30 PM	NE
AVERAGE WIND SPEED	4.3			
AVERAGE WIND SPEED @ 8:00 AM	3.8			

BAROMETRIC PRESSURE (7)	IN. HG	DATE	TIME
AVERAGE PRESSURE @ 8:00 AM	29.45		
MAXIMUM PRESSURE	29.70	4/22/2026	9:00 AM
MINIMUM PRESSURE	29.30	4/9/2026	8:00 PM

NOTES

(1) October 2018 to Present data gathered from District rain gauges
(2) 1975 to Present data gathered from District rain gauges
(3) 1968 to Present data gathered from District rain gauges
(4) 1967 to Present data gathered from District rain gauges
(5) October 2018 to Present data gathered from District rain gauges
(6) Data retrieved from CIMIS (<http://www.cimis.water.ca.gov/WSNReportCriteria.aspx>) (125 Arvin-Edison)
(7) Data retrieved from Weather Underground (<https://www.wunderground.com/us/ca/arvin/zmw:93203.1.99999>)
Precipitation Day is 8:00 AM to 8:00 AM

EXHIBIT "E"

ARVIN-EDISON WATER STORAGE DISTRICT

WY2026 ENERGY CONSUMPTION AND POWER DEMAND

ENERGY CONSUMED - KWH							TOTAL DEMAND - KW						
Month	Forrest Frick PP	Distrib. System	Spreading	Wells	Intertie PP	Total	Forrest Frick PP	Distrib. System	Spreading	Wells	Intertie PP	Total	Load Factor
MAR 26	1,886,197	3,726,551	140,493	2,874,159	4,164	8,631,563	4,609	15,575	1,174	6,934	7	28,299	41%
APR	1,102,059	4,048,867	17,003	6,466,280	3,981	11,638,191	4,021	15,357	355	10,188	8	29,929	54%
MAY													
JUN													
JUL													
AUG													
SEP													
OCT													
NOV													
DEC													
JAN 27													
FEB													
TOTAL	2,988,256	7,775,418	157,496	9,340,439	8,145	20,269,754							

Notes: - Since 2005 KW records reflect non-simultaneous demands.
 - Energy use for lighting accounts for approximately 90,000 kWh/month at District wellfields and 4,000 kWh/month at the Intertie Pumping Plant

EXHIBIT "F"
 ARVIN-EDISON WATER STORAGE DISTRICT
 2026 WATER YEAR WELLFIELD PRODUCTION - AF

Month	Bal Res		North Canal 6		Wellfield						Total		
	AF	% of Historical Max	AF	% of Historical Max	North		Sycamore		Tejon		AF	AF / Day	% of Historical Max
					AF	% of Historical Max	AF	% of Historical Max	AF	% of Historical Max			
MAR - 26	0	0%	485	40%	1,601	62%	1,467	22%	345	6%	3,898	126	25%
APR	0	0%	1,082	90%	2,731	90%	3,335	48%	984	20%	8,132	271	55%
MAY	0	0%	0	0%	0	0%	0	0%	0	0%	0	0	0%
JUN	0	0%	0	0%	0	0%	0	0%	0	0%	0	0	0%
JUL	0	0%	0	0%	0	0%	0	0%	0	0%	0	0	0%
AUG	0	0%	0	0%	0	0%	0	0%	0	0%	0	0	0%
SEP	0	0%	0	0%	0	0%	0	0%	0	0%	0	0	0%
OCT	0	0%	0	0%	0	0%	0	0%	0	0%	0	0	0%
NOV	0	0%	0	0%	0	0%	0	0%	0	0%	0	0	0%
DEC	0	0%	0	0%	0	0%	0	0%	0	0%	0	0	0%
JAN - 27	0	0%	0	0%	0	0%	0	0%	0	0%	0	0	0%
FEB	0	0%	0	0%	0	0%	0	0%	0	0%	0	0	0%
Total	0		1,567		4,332		4,802		1,329		12,030	33	7%
Ratio	0%		13%		36%		40%		11%		100%	Average	
Wells	4		6		15		34		29		88		
AF/Well	0		261		289		141		46		137		

EXHIBIT "G-1"
 ARVIN-EDISON WATER STORAGE DISTRICT
 2026 WATER YEAR GROSS SPREADING - AF

Month	Eastside Canal Sunset	Bal Res	North Gravity	North Pressure	Sycamore	Tejon Gravity	Tejon Pressure	District Land Caliente	Landowner Recharge ⁽¹⁾	Subtotal	In-Lieu	Temporary Water	Total
MAR-26	0	67	794	260	153	920	251	0	0	2,445	0	0	2,445
APR	0	120	0	0	0	0	0	0	0	120	0	0	120
MAY	0	0	0	0	0	0	0	0	0	0	0	0	0
JUN	0	0	0	0	0	0	0	0	0	0	0	0	0
JUL	0	0	0	0	0	0	0	0	0	0	0	0	0
AUG	0	0	0	0	0	0	0	0	0	0	0	0	0
SEP	0	0	0	0	0	0	0	0	0	0	0	0	0
OCT	0	0	0	0	0	0	0	0	0	0	0	0	0
NOV	0	0	0	0	0	0	0	0	0	0	0	0	0
DEC	0	0	0	0	0	0	0	0	0	0	0	0	0
JAN-27	0	0	0	0	0	0	0	0	0	0	0	0	0
FEB	0	0	0	0	0	0	0	0	0	0	0	0	0
Total	0	187	794	260	153	920	251	0	0	2,565	0	0	2,565
Ratio													
Ratio													

Total Pressure		187		260			251			698			698
-----------------------	--	-----	--	-----	--	--	-----	--	--	-----	--	--	-----

EXHIBIT "H-1"
ARVIN-EDISON WATER STORAGE DISTRICT
STATIC VS PUMPING WATER LEVELS IN DISTRICT WELLS - APR 2026
 ALL VALUES IN FEET

	WELL #	STATIC LEVEL	PUMPING LEVEL	BOWL ¹ DEPTH	TOTAL DEPTH	DRAW ^{2,3} DOWN	BOWL ⁴ COVERAGE
NORTH CANAL (25)	N1	471	578	610	840	107	32
	N2	453	582	700	840	129	118
	N3	388	416	610	840	28	194
	N4	441	467	550	864	25	83
	N5	354	365	550	864	12	185
	N6	463	506	640	900	43	134
	N7	464	491	600	990	28	109
	N8	410	456	560	950	46	104
	N9	446	557	700	970	111	143
	N10	432	499	560	1020	67	61
	N11	414	470	562	1000	55	92
	N12	464	491	600	1010	28	109
	N13	408	436	540	980	28	104
	N14	441	461	540	928	21	79
	N15	384	529	700	1190	146	171
	N16	401	515	610	1198	114	95
	N17	N/A	N/A	610	1190	N/A	N/A
	N18	351	411	610	1180	60	199
	N19	474	520	760	1360	46	240
	N20	483	552	820	1020	69	268
	N21	444	534	660	950	90	126
	N22	445	471	680	1000	26	209
	N23	436	455	720	1030	19	265
	N24	440	466	720	1000	25	254
	N26	434	458	760	1290	24	302
	Avg	431	487				

	WELL #	STATIC LEVEL	PUMPING LEVEL	BOWL ¹ DEPTH	TOTAL DEPTH	DRAW ^{2,3} DOWN	BOWL ⁴ COVERAGE
TEJON (29)	71	479	516	800	1068	37	284
	72	466	482	800	1087	16	318
	73	472	507	800	1068	35	293
	74	463	514	800	1068	51	286
	75	465	486	800	1068	21	314
	76	455	506	700	1032	51	194
	77	465	527	800	1056	62	273
	78	456	509	800	1044	53	291
	79	551	652	800	1032	102	148
	80	449	541	800	996	92	259
	81	340	388	700	996	49	312
	82	351	400	700	996	49	300
	83	425	N/A	N/A	N/A	N/A	N/A
	84	349	377	700	996	28	323
	86	488	518	800	996	30	282
	87	481	511	800	984	30	289
	88	481	516	800	948	35	284
	89	467	502	800	996	35	298
	90	538	573	700	996	35	127
	92	500	555	800	980	55	245
	93	496	514	800	1050	18	286
	94	560	664	860	1050	104	196
	95	460	N/A	N/A	N/A	N/A	N/A
	96	500	634	800	1100	134	166
	98	501	552	760	1340	51	208
	99	463	499	760	1340	36	261
	100	460	502	800	1340	42	298
	101	440	516	740	1310	76	224
	102				1310		
	Avg	467	518				

OUT OF SERVICE (2)
AIRLINE FAILURE, ACOUSTIC SOUNDER USED (16)
MONITORING WELLS (4)
UNSTABLE DATA (1)
NEW WELLS PENDING (2)

	WELL #	STATIC LEVEL	PUMPING LEVEL	BOWL ¹ DEPTH	TOTAL DEPTH	DRAW ^{2,3} DOWN	BOWL ⁴ COVERAGE
SYCAMORE (35)	1	379	414	645	800	35	231
	2	214	351	570	879	136	219
	4	462	497	700	876	35	203
	5	447	480	690	840	32	210
	6	413	480	690	886	67	210
	7	453	511	700	850	58	189
	8	443	N/A	N/A	N/A	N/A	N/A
	9	467	508	700	500	42	192
	10	443	482	690	886	39	208
	11	451	497	700	910	46	203
	12	464	504	700	898	39	196
	13	N/A	N/A	690	850	N/A	N/A
	14	400	447	680	850	46	233
	15	444	537	710	850	92	173
	16	441	536	700	898	95	164
	17	394	597	650	850	203	53
	18	495	530	650	850	35	120
	20	434	468	690	804	35	222
	21	429	498	690	910	69	192
	22	416	446	610	792	30	164
	23	415	445	600	792	30	155
	24	418	450	570	792	32	120
	25	416	444	610	792	28	166
	26	413	475	690	816	62	215
	28	320	377	590	792	58	213
	29	424	475	690	792	51	215
	31	427	473	660	744	46	187
	32	N/A	N/A	660	744	N/A	N/A
	33	451	557	700	793	106	143
	34	433	N/A	N/A	N/A	N/A	N/A
	35	455	534	700	800	79	166
	36	425	462	600	730	37	138
	37	422	454	540	820	32	86
	38	431	487	880	1270	56	383
	39				1190		
	Avg	422	480				

MONTHLY SUMMARY - AVERAGE WATER LEVELS						
READINGS	STATIC LEVELS			PUMPING LEVELS		
	END OF	N. CANAL	SYCAMORE	TEJON	N. CANAL	SYCAMORE
APR-25	429	418	459	488	474	512
MAY	430	428	473	489	484	526
JUN	436	423	489	495	480	545
JUL	435	420	489	495	476	544
AUG	436	423	487	496	478	541
SEP	436	421	483	494	477	537
OCT	429	413	469	487	468	524
NOV	423	403	458	481	458	512
DEC	421	399	449	479	454	504
JAN	419	397	443	478	452	498
FEB	418	395	440	476	450	494
MAR	425	416	460	481	472	513
APR-26	431	422	467	487	480	518
12 MONTH CHANGE	-02	-04	-08	+01	-06	-06

¹ Bowl depth is measured from the bottom of the bowls to top of the pump.

² When pumps aren't running, pumping levels are estimated based on previous draw down records. (6 month avg.)

³ Red numbers indicate drawdowns that are above 100.

⁴ Red numbers indicate bowl coverage that is below 50.

WATER SUPPLY

Friant Division Central Valley Project (CVP)

- The initial 2026 Water Year allocation was announced on February 26, 2026, at 100% Class 1, which amounts to 40,000 AF, and 0% Class 2. There was concern that the 100% Class 1 allocation would be reduced, however, April storms have helped to keep the allocation at 100%.
- Exhibit “A” provides additional supply information for 2026 Water Year supplies.

San Joaquin River (SJR) Restoration Program (SJRRP)

- On April 20, 2026, the SJRRP transmitted to the Restoration Administrator (RA) an updated Restoration Allocation for the 2026 Water Year. The allocation is based on a 75% Exceedance forecast of 1,444,000 AF of natural river runoff, which is a Normal-Dry water year type and results in a restoration flow allocation of 282,547 AF.
- The RA submitted a proposed schedule on May 4, 2026, which recommends the release of 214,185 AF of Restoration Flows to the river, which is less than the restoration allocation due to downstream capacity limitations, leaving approximately 64,944 AF (net) of potential Unreleased Restoration Flows (URF).
- On March 19, 2026, 10,479 AF (net) of URFs were made available to Friant Class 1 contractors, of which the District’s portion is 530 AF. This quantity must be used by April 15, 2026.
- On May 5, 2026, 10,002 AF (net) of URFs were made available to Friant Class 2 contractors, of which the District’s portion is 2,224 AF. This quantity must be used by May 24, 2026.
- To date, the District has received 2,602 AF of Recapture supplies.
- District’s Recovered Water Account (RWA) balance is approximately 68,000 AF. RWA credits allow the District to purchase water for \$10/AF during wet periods (uncontrolled season but subject to canal prorate) when RWA water is declared.

Other CVP Contractors

- The current North-of-Delta 2026 allocation is 100% for Agricultural Service Contractors.
- The current South-of-Delta 2025 allocation is 20% for Agricultural Service Contractors, this includes the District’s Fresno County supply which amounts to 600 AF. However, due to Delta water quality concerns and pumping limitations, it’s possible that not all the 600 AF will be made available to the District.

WATER SUPPLY

Friant Division Central Valley Project (CVP)

- The initial 2026 Water Year allocation was announced on February 26, 2026, at 100% Class 1, which amounts to 40,000 AF, and 0% Class 2. There was concern that the 100% Class 1 allocation would be reduced, however, April storms have helped to keep the allocation at 100%.
- Exhibit “A” provides additional supply information for 2026 Water Year supplies.

San Joaquin River (SJR) Restoration Program (SJRRP)

- On April 20, 2026, the SJRRP transmitted to the Restoration Administrator (RA) an updated Restoration Allocation for the 2026 Water Year. The allocation is based on a 75% Exceedance forecast of 1,444,000 AF of natural river runoff, which is a Normal-Dry water year type and results in a restoration flow allocation of 282,547 AF.
- The RA submitted a proposed schedule on May 4, 2026, which recommends the release of 214,185 AF of Restoration Flows to the river, which is less than the restoration allocation due to downstream capacity limitations, leaving approximately 64,944 AF (net) of potential Unreleased Restoration Flows (URF).
- On March 19, 2026, 10,479 AF (net) of URFs were made available to Friant Class 1 contractors, of which the District’s portion is 530 AF. This quantity must be used by April 15, 2026.
- On May 5, 2026, 10,002 AF (net) of URFs were made available to Friant Class 2 contractors, of which the District’s portion is 2,224 AF. This quantity must be used by May 24, 2026.
- To date, the District has received 2,602 AF of Recapture supplies.
- District’s Recovered Water Account (RWA) balance is approximately 68,000 AF. RWA credits allow the District to purchase water for \$10/AF during wet periods (uncontrolled season but subject to canal prorate) when RWA water is declared.

Other CVP Contractors

- The current North-of-Delta 2026 allocation is 100% for Agricultural Service Contractors.
- The current South-of-Delta 2025 allocation is 20% for Agricultural Service Contractors, this includes the District’s Fresno County supply which amounts to 600 AF. However, due to Delta water quality concerns and pumping limitations, it’s possible that not all the 600 AF will be made available to the District.

State Water Project (SWP)

- The current California Department of Water Resources 2026 State Water Project allocation is 30%.

Kern River

- The Kern River 2025 April through July runoff is 63% of average.

Water Bank Facilities

- The District is expected to recover approximately 62,000 AF of previously banked supplies in Water Year 2026.

Metropolitan Water District (MWD) Program

- MWD account balance remains at 100,201 AF.
- The District obtained its sixteenth consecutive year approval from the State Water Resources Control Board regarding a Petition for a Consolidated Place-of-Use (CPOU) which now expires on July 22, 2026.
- The CPOU petition includes the ability to exchange all types of Arvin-Edison supplies with MWD including unbalanced exchanges.
- The District's 10-year NEPA documentation is complete and approved until March 2034.
- In January 2026, the District utilized the Water Quality Sub Account mechanism with MWD and delivered ~5,700 AF of Class 2 water which was returned the following February and March.

Rosedale-Rio Bravo Water Storage District (RRBWSD) Program

- The District's account balance in RRBWSD on March 2026 was approximately 35,000 AF. District anticipates to receive 10,000 AF of returned bank supplies from RRBWSD in during Water Year 2026, leaving approximately 25,000 AF in the account balance.

District Partnerships

- The District received a ten-year approval (through Water Year 2035) from USBR to transfer and exchange Friant Division CVP water to Kings River Area Agencies and Kern County Districts.
- The District has participated in water management programs with the following districts/agencies in Water Year 2025 to date:

Fresno County
Madera Irrigation District
Del Puerto Water District
City of Bakersfield

Rosedale Rio Bravo WSD
SJRRP Recapture/Recirculation
Chowchilla Water District

WATER DEMAND

District turnout deliveries (not including on-farm recharge) for the month were 13,206 AF.

- The following is a summary of surface water deliveries for April 2026.

<u>Water Type</u>	<u>Month of April</u>		<u>Water Year to Date</u>	
	10 Yr. Avg.	2026	10 Yr. Avg.	2026
SWSA	11,116	13,206	15,973	23,981
In-Lieu		0		0
Temporary		0		0
Spreading*	n/a	120	n/a	2,565
	Total	13,326	Total	26,546

*Direct spreading, including Landowner (on-farm) Recharge

- Exhibits "B-1", "B-2", and "B-3" illustrate the delivery data.
- The month's peak daily in-District demand was 426 cfs, which occurred on the 7th.
- Exhibit "C-1" details Canal Water Quality information.
- Exhibit "C-2" presents the Aquatic Pest Control Treatments (\$0 for Calendar Year 2026).

GENERAL

- District vehicles consumed an estimated 3,922 gallons of fuel during the month (average fuel efficiency of 13.34 mpg).
- There were 447 hours lost due to illness and 96 hours lost due to on-the-job injuries.
- Exhibit "D" highlights precipitation, temperature, and wind speed.
- Exhibit "E" summarizes energy consumption and power demand.



***Frank Lozano's Retirement Celebration
(left to right: Ryan Coday, Frank Lozano,
David Zaragoza and Kevin McGill)***

ENGINEERING DEPARTMENT ACTIVITIES

Routine Activities

- Review and accounting of District's water supply and related contracts.
- Administration or proposals of water management and wheeling agreements.
- Groundwater level surveys and associated exhibits.
- Water quality testing.
- ArcGIS database updates/maintenance (facilities, water service areas, boundaries, etc.).
- CIMIS station management (<https://cimis.water.ca.gov/Stations.aspx>).
- Land use/crop surveys with data entry.
- Monthly/annual reports regarding water deliveries, water use, and energy use.

Grants & Funding Opportunity Updates

Project Name	Drought Recovery Wells and Conjunctive Use Modeling Tool	Forrest Frick Unit Project		White Wolf Groundwater Sustainability Agency	Groundwater Flow Model and Decision Support Tool	North Canal Spreading Works Expansion Project		DiGiorgio Unit Phase 2b-5 Project	Tejon Spreading Works Project	
Grant Name	USBR 2023 WaterSMART Drought Recovery Program Grant	DWR Round 2 Integrated regional Water Management Grant	Community Project Funding Grant	DWR – SGM Round 2 Grant	USBR 2023 Water SMART Applied Science Grant	DWR – Flood Diversion Recharge Enhancement (FDRE) Grant	FY2026 Community Project Funding Grant	USBR 2024 Planning and Project Design Grant	FY 2027 Community Project Funding Grant	USBR 2026 Water SMART Drought Response Program
Grant Type	Federal	State	Federal	State	Federal	State	Federal	Federal	Federal	Federal
Grant Status	Awarded	Awarded	Awarded	Awarded	Awarded	Awarded	Secured	Awarded	Funding Request Submitted	Preparing Application
Grant Amount	\$2 Million	\$2 Million	\$3.25 Million	\$4.8 Million	\$95,000	\$999,500	\$2 Million	\$308,170	\$5 Million	\$1,500,000
Notes	<i>Final Grant Report Due 7/29/26</i>		<i>Grant Agreement Received 4/3/26</i>		<i>Grant is complete</i>		<i>1/8/26 - Valadao press release issued for funding recipients 2/4/26 - Received official notification from EPA</i>		<i>3/9 - Funding Request Submitted to Valadao's office</i>	<i>Grant Application due 7/28/26</i>

- NRCS landowner incentive programs assist with implementing various conservation activities, including but not limited to, irrigation system improvements, filtration needs, water/nutrient/pest management, and engine replacement:
 - Phone (661) 336-0967
 - Website (www.ca.nrcs.usda.gov)
- North West Kern Resource Conservation District provides discounted on-farm irrigation distribution uniformity and efficiency testing
 - Phone (661) 281-2746
 - Website (<http://northwestkernrcd.org>)

AEWSD Current Construction Projects

	N24 & N26 Recovery Wells – Drilling & Equipping	N24 & N26 Recovery Wells – Electrical	S39 & T102 Wells – Drilling & Equipping	S39 & T102 Wells – Electrical
	Bakersfield Well & Pump	A-C Electric	Bakersfield Well & Pump	TBD
Construction Start Date	March 2025	March 2025	November 2025	TBD
Punch List	March 2026	March 2026	June 2026	TBD
Final Project Close-Out	March 2026 – SUBSTANTIAL COMPLETION ISSUED	March 2026 – SUBSTANTIAL COMPLETION ISSUED	June 2026	TBD
Current Construction Contract Costs	\$2,144,560 (Change Order #1-6 for revised quantities and additional days due to material delays)	\$557,706.37 (Change Order #1-4 for fencing, external display for soft starts and additional days due to material delays)	\$2,229,092	TBD (Board Approved Amount \$525K)
Total Grant Funding	\$2,000,000 (Federal Share) \$2,160,421 (Recipient Share)		N/A	N/A
Notes	*Time Extension approved. Grant Funding needs to be spent by March 31, 2026. Final grant report due July 29, 2026.			Electrical Construction pricing is being obtained.

	NCSW Expansion – FDRE – 1 st Contract	NCSW Expansion – FDRE – 2 nd Contract	White Wolf Subbasin 850 Canal Intertie	White Wolf Temp Water Program	Frick Unit Phase 2 – Main Line
	Pay Dirt Construction	Super Ag Construction	Laurel Ag & Water	Superior Ag Construction	Superior Ag Construction
Construction Start Date	July 2025	December 2025	July 2025	October 2025	February 2026
Punch List	November 2025	May 2026	March 2026	March 2026	October 2026
Final Project Close-Out	January 2026 - COMPLETE	May 2026	April 2026 – SUBSTANTIAL COMPLETION ISSUED	April 2026 – SUBSTANTIAL COMPLETION ISSUED	October 2026
Current Construction Contract Costs	\$1,048,815.25 (Change Order #1-5 approved to add raising of exterior levees work, no cost time extension and rip rap)	\$763,699.83 (Change Order #1 approved 12/3/25 to extend completion date due to raising of exterior levees work. Change Order #2 approved for IBS boxes and time extension for material delay)	\$649,563.47 (Change Order #1-5 approved for extra work, weather delays and no cost time extension)	\$785,012.69 (Change Order #1-3 approved for extra work, weather delays and no cost time extension)	\$4,354,795.08
Total Grant Funding	\$999,500		\$925,000	\$1,345,000 (\$212,000 is allocated to WRMWSD)	\$1,000,000 (DWR Estimated Remaining Funds after Phase 1)
Notes	*FDRE Grant Funding needs to be spent by March 31, 2026. Final reimbursement deadline is May 1, 2026		*Grant Amendment Approved to extend out to 6/30/2026	*Grant Amendment Approved to extend out to 6/30/2026	EPA Funding will be used for Phase 3 – Laterals DWR Funding to be spent by March 2027.

AEWSD Upcoming Construction Projects

	Frick Unit Phase 3 - Laterals	North Canal Spreading Works Expansion
Bid Advertisement	June 23, 2026	TBD
Board Approval	August 11, 2026	TBD
Anticipated Notice to Proceed	September 8, 2026	TBD
Mobilization Start	September 2026	TBD
Projected Completion Date	June 2027	TBD
Current Estimated Costs	\$4,195,000	\$5,000,000
Total Grant Funding	\$3,250,000 (EPA Grant Funding will be allocated to Phase 3 of the Frick Unit Project)	\$2,000,000 (EPA Grant Funding)
Notes	<p>*DWR Grant Funds must be spent by March 31, 2027</p> <p>*SPA Grant Funds must be spent by June 30, 2028</p>	<p>* Bidding and Construction start are dependent on EPA grant agreement.</p>

Other Activities

- Administration and accounting of on-going water management programs.
- Technical support and review of ongoing projects/studies such as:
 - Potential Interconnections with other Districts.
 - Pump Replacement Program.
 - Turnout Modification Requests.
 - Temporary and/or In-Lieu Water Service Contract Requests.
 - Pump Efficiency Testing.
 - Real Time Water Quality Monitoring.
 - Stand tank Painting Project.
 - Stand tank and pressure vessel inspections.

SGMA Activities

- The Kern Subbasin continuation hearing was held September 17, 2025. The State Water Resources Control (SWRCB) board was satisfied with the 2025 GSP and decided to send the Subbasin back to the California Department of Water Resources. The official letter from the SWRCB sending the Subbasin back to the DWR was issued December 8, 2025.
- The Kern Subbasin 2025 GSP is now being implemented.
- Continued coordination meetings and outreach activities.
- Attended various GSA meetings.
- Collected groundwater levels and water quality data.

- Continued coordination efforts with South of Kern River GSAs (posted on website www.sokrgsp.com).
- Continued implementation and coordination efforts with White Wolf Subbasin GSA and GSP (posted on website www.whitewolfgsa.org).

Requests for Information/Easements/Planning Notices

- Water supply
- Water costs
- Historical groundwater levels
- Monitoring well conversions
- Water quality
- Land use data
- Easements and/or right-of-way encroachments
- Reviewed/responded to multiple planning notices
- Reviewed/responded to environmental documents as necessary
- Responded to As Built Requests

Power Related Activities

- Revised power purchase agreements with White Pine Renewables for a total of 10 MW solar production.
- Managed Electrical Distribution Expansion Study process.
- Reviewed Renewable Portfolio Standards balances.
- Coordinated planned PG&E outages, meter repairs and reviewed Trimark and RBI invoices.
- Performed weekly load forecast reviews.
- Reported on PWRPA power accounting.
- Reviewed PWRPA monthly invoices for billing anomalies/meter reconciliations.
- Reviewed power reconciliation reporting tool.
- Worked on On-Farm Solar RECS agreements and reporting.
- Maintained Wells First Off List (efficiency rating).
- Performed Load forecast updates and rate analysis.
- Coordinated with PG&E on meter inventory information.
- Coordinated new power service design and construction projects.
- Coordinated monthly landowner Groundwater meter reads, repairs and prepared reports.

SPREADING WORKS OPERATIONS (WELLFIELDS AND BASINS)

- Exhibit “F” summarizes wellfield production to date.
- Exhibit “G-1” summarizes gross direct spreading to date.
- Exhibits “H-1” and “H-2” summarize current static and/or pumping water in table and graphic forms.

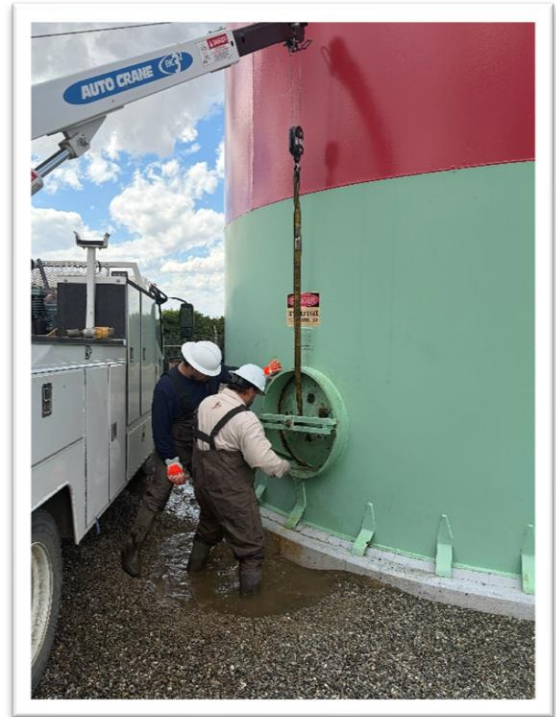
Well Repair Status Report

Well Number	Year Built	Age (Years)	Cased Depth (ft)	Previous Well Condition Rating	Current Status	Problem	Notes/Discussion
Sycamore 13	1967	59	840	Acceptable	Permanently Out of Service	Apparent Pump Failure	<ul style="list-style-type: none"> o Well needs to be abandoned in some manner after pump was not able to pulled from well. o The pump would not come free and the column/tube/shaft ultimately separated 220' down. o I recommend we install a locking cap on the well head and leave it as is.

OPERATIONS DEPARTMENT ACTIVITIES

Routine Activities

- Operated District's water distribution and delivery systems (canal, reservoirs and wells).
- Conducted monthly safety meetings.
- Performed monthly meter reads at Turnouts and Pump Plants (water and power).
- Maintained weed control at Pump Plants, Turnouts, Air-Vents, and Isolation Valves.
- Monitored Forrest Frick Pumping Plant operations and Intake Canal water levels.
- Inspected control systems at Pump Plants (Transducers, Cla-valves, etc.).
- Replaced burned out Pump Plant lights and panel bulbs.
- Monitored flows and levels at the Intake, North and South Canal.
- Applied warning labels on Turnouts.
- Daily wellfield readings.
- SGMA monthly well readings.
- Monthly safety meeting.



Retrieving Underwater Drone at Pump Plant N55-P7 after Inspection

Additional Activities

- Replaced locks and chains on various Intake gates.
- Continued fine tuning and upgrading WildEye remote monitoring of Turnout meters.
- Charged WildEye external batteries Districtwide.
- Closed and de-watered DiGiorgio line.
- Replaced Pump Plant N1-P1 pressure gauge on air vessel.
- Replaced a 10" butterfly valve at Turnout A-64.
- Re-Programmed Turnouts C-3, C-96, C-27, C-98 and M-21 meters.
- Replaced Turnouts C-40 and W-39 WildEye devices for warranty.
- Replaced air vent on Turnout E-35.
- Repaired vandalism on WildEye box at Turnout E-42.
- Replaced North well 20, Turnouts A-30 and M-38 meters.
- Replaced and re-programmed Turnout M-1 meter.
- Installed WildEye on Turnout M-6.
- Re-Configured Turnouts T-21, W-37, W-65, M-5 and M-38 WildEye devices.
- Checked isolation valves after 850 Intertie completion.

Underground Service Alert (USA) Report

- District initiated 0.
- Responded to 198 USA notices to locate District underground facilities.
 - 15 required markings of District facilities.
 - 93 were renewals.
 - 90 with no conflicts.

Power Outages and/or Interruptions Involving the Following Systems

Power Interruptions													
FFPP		BR		S32		S68		S88		OFFICE	1	SYC	1
N1		N41		S38		S73	1	S93		INTERTIE		TEJON	
N8		N55	1	S64		S78		EOC		NC		CVC	

Lateral Prorates

Prorated Laterals (days)											
N1	0	N8	0	N24	0	N41	1	N55		7	
S32	0	S38	20	S64	4	S73	7	S88	0	S93	7

Facility Improvements (Repairs-R or New-N)

Meters-N		Valves-N	
A-30	North well 20	A-64	
T-29			

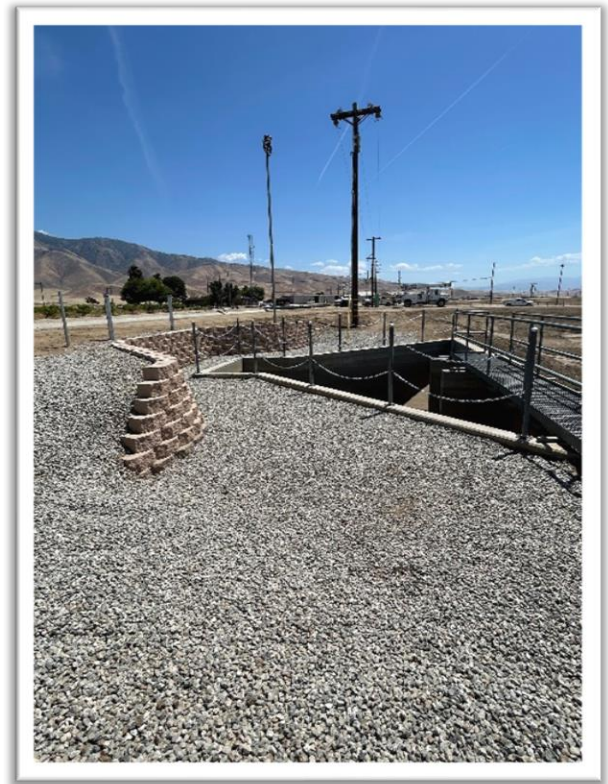
MAINTENANCE DEPARTMENT ACTIVITIES

Routine Activities

- Performed weekly yard duties at Headquarters.
- Cleared-out forebays at North and South Canal.
- Organized Maintenance Warehouse.
- Maintenance of the CIMIS Station.

Additional Activities

- Assisted the Bakersfield office with furniture relocation and setup.
- Replaced the Grader 772 GP bottom blade.
- Replaced doorknobs on N1 lateral MCC buildings.
- Replaced signs at the North Canal gates.
- Serviced the HVAC system at Headquarters.
- Installed retaining wall at Sycamore Spreading Works.
- Mowed and bladed at Sycamore Spreading Works.
- Removed tumbleweeds at Tejon Spreading Works.
- Repaired a pinhole leak on Turnout W-37.
- Repaired a pinhole leak on Turnout T-47.
- Painted structure callouts at Tejon Spreading Works.
- Performed cleanup and removal of bins at the El Paso property.



Installation of Retaining Wall at Sycamore Spreading Works



Building Demolition and Debris Removal at El Paso Property



Debris Removal at El Paso Property

Mechanic's Shop Repair Activities

- Weekly inspection on gas tank and pump.
- Fixed hydraulic leak on Schulte mower.
- Installed new tire on dump trailer.
- Fixed water leak on water truck.
- Repaired rear tires on Backhoe 410E.

Part	Repair/Replaced	Part	Repair/Replaced
Routine Service	8	A/C Service/Heater	4
Brakes	4	Belts	2
Tires	10	Headlights/Taillights	0/2
Tire Repairs	6	Shocks	0
Rotors/Drums /Wheel Bearings	0/0	Wiper Blades/Engine Washes	6/2
Batteries	2	Cabin Filter	4
Fuel Filters	4	Trailer Lights/Spotlights	2/1
Tune-ups	2	Cleaned Throttle Body	2
Clean TPS Sensor	2	Misc.	3

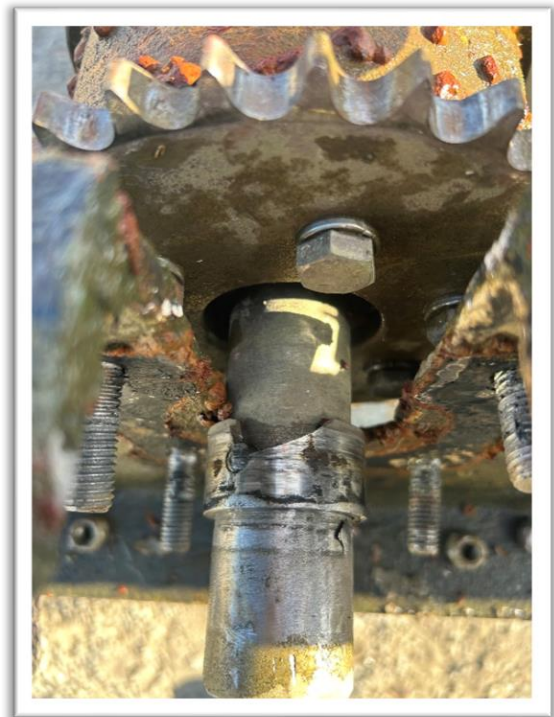
PUMP DEPARTMENT ACTIVITIES

Routine Pump Maintenance Activities

- Replaced various pump packings.
- Lubricated pump bearings at various Pumping Plants.
- Maintained drip oil on District Wells.
- Inspected and maintained Air Compressors.
- Inspected and/or adjusted Traveling Water Screens/Moss Screens.
- Cleaned out or replaced Yardney filter for the Moss Screens sprayer pumps.

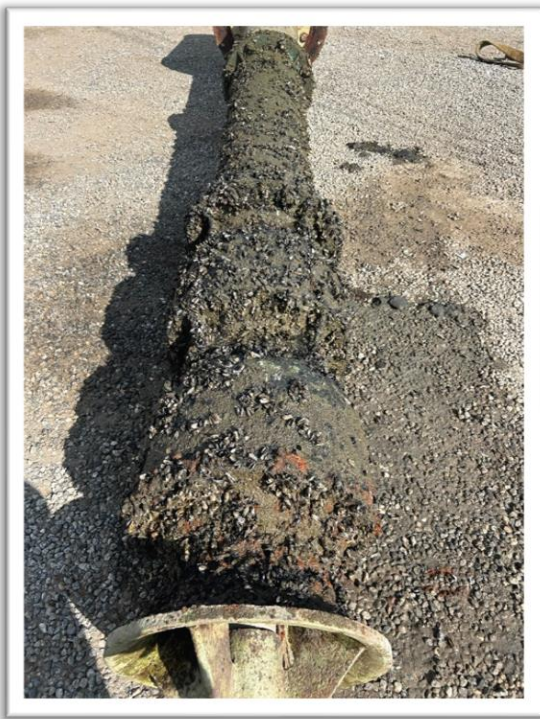
Additional Activities

- Inspected the head pressure on all Pump Plants Districtwide.
- Installed a new 3" air valve at Sycamore Well #6 and performed well start-up.
- Replaced a bad 300 HP motor at Sycamore Well #20.



**Repaired Moss Screen Broken Shaft
at Pump Plant S38-P1**

- Installed a new site tube for the oil dripper reservoir at Tejon Well #80.
- Redirected the flush lines at Pump Plant N41-P1.
- Replaced 12" check valve spring at Pump Plants N55-P1 unit #7 and S64-P2 unit #3.
- Changed the 3" inline check valve for the sprayer pumps at Pump Plants N55-P1, S73-P1 and S88-P1.
- Repaired the broken shaft for the Moss Screen at Pump Plant S38-P1.
- Replaced an O-ring for a 16" check valve at Pump Plant S38-P1 unit #2.
- Replaced a 16" check valve at Pump Plant S38-P2 unit #2.
- Replaced a 10 CFS vertical pump at Pump Plant S64-P1 unit #3.
- Repaired a broken 2" suction line for the sump pump at Pump Plant S64-P3.
- Repaired the sump pump at Pump Plant S93-P1.
- Replaced a 1" hose for the sump pump at Pump Plant S93-P3.
- Replaced the rotating element of 10 CFS pumps at Pump Plant N8-P2 unit #1 and N55-P2 unit #1.
- Replaced the rotating element of 5 CFS pumps at Pump Plants N55-P7 unit #2 and N55-P9 unit #2.



***Pulled Vertical Pump
Showing Dead Mussels***



Oversaw N24 and N26 Well Startups

PUMP & MOTOR REPAIR SUMMARY

	Pumping Plant/Wells	Unit	Size	Time/Hours	Reason
Vertical Pumps	S64-P1	3	10 CFS	13645.1	Bushing Bad/Vibrations
Vertical Motors	Sycamore	20	300 HP	N/A	Bad Thrust Bearing
Horizontal Pumps	N55-P9	2	5 CFS	22621.3	Bad Bearings and Sleeves
	S73-P3	2	10 CFS	0116.3	Bad Bearings
	N8-P2	1	1 CFS	06953.9	Broken Shaft
	N55-P7	2	5 CFS	17776.2	Bad Bearings
	N55-P2	1	10 CFS	65304.1	Bad Sleeves
Horizontal Motors					

CONTROLS DEPARTMENT ACTIVITIES

Routine Activities

- Processed monthly purchase orders.
- Performed electrical maintenance and repairs.
- Monthly inventory.

Distribution System Improvements (Repairs-R or New-N)							
Starter Controls	Contactors / Soft Start	Aux. Contact Block	Motor Control Panels	Battery Back-up Units	Circuit Breakers	Hour meters	Trip Units
	N – S38-P1 unit #2 – replaced motor starter contactors	N – S92-P1 unit #1 – replaced H-O-A normally open contact blocks	N – N55-P1 unit #2 – replaced motor starter resistor		R -- S73-P3 unit #3 – repaired circuit breaker	N – S38-P1 unit #2 – replaced hour meter	
		N – S38-P1 unit #2 – replaced motor starter contact blocks				N – S73-P1 unit #4 – replaced hour meter	
						N – N55-P1 unit #6 – replaced hour meter	
						N – S73-P3 unit #4 – replaced hour meter	

						N – N64-P1 unit #3 – replaced hour meter	
						N – N55-P1 unit #3 – replaced hour meter	
						N – N55-P2 unit #6 – replaced hour meter	
						N – S68-P1 unit #2 – replaced hour meter	
						N – S73-P3 unit #3 – replaced hour meter	

Distribution System Improvements (Repairs-R or New-N)							
Radios	PLC's or Contro l Mods.	Photocell / Lights	Wiring	Valve Controllers or Limitorque	Coils	Relays / Thermal O/L	Fuses / Transducers
			N – N55-P1 compressor #2 – replaced starter coil and contact blocks	N – FFPP unit #8 – replaced burnt control wiring & blown fuse on EIM		N – S73-P2 unit #2 – replaced machine tool relay	N – S38-P2 – replaced stand tank pressure transducer
			N – S93-P1 – ran new underground control wiring for the outside LED flood lights			N – N41-P1 moss screen – replaced thermal overload relay	
			N – N55-P9 – replaced station breaker voltmeter			N – N8-P3 unit #3 – replaced machine tool relay	

Well Facility Improvements (Repairs-R or New-N)							
Transformers (number)	Thermal Overloads	Lightning Arrestor	Panel wiring / Circuit Breaker /Cont	Soft Start Equipment	Control Fuses	Relays / Switches	12KV Fuses
N – Sycamore Well #23 – replaced fuse cutouts & cross arm. Adjusted the transformer voltage tap setting			N – Sycamore Well #26 – replaced circuit breaker				N – Sycamore Well #6 – replaced queen power pole, span guy pole, fuse cutouts, cross arm & timber
N – Sycamore Well #12, #14 & #25 – replaced new guy guards			N – Tejon Well #88 – pulled new underground motor cable				
N – Sycamore Well #6 & #29 – replaced 12kv cross arm vis-strips			N – Tejon Well #76 – pulled new underground motor cable				
N – Sycamore Well #1 & #15 – replaced combo cutouts & primary bussing			N – Sycamore Well #12, #15 & #16 – replaced motor leads flex conduit.				
N – Tejon Well #89 – change out inline 12kv power pole							

Additional Activities

- Oversaw the fire protective equipment installation and scheduled three-day (3) shutdowns at Forrest Frick Pumping Plant.
- Assisted contractor to automate the LIM injection pump for water treatment.
- Oversaw and assisted contractors with the startup of North Canal Spreading Works Well #24 and #26.
- Oversaw contractor on the 12kv line repair work order for Sycamore and Tejon Spreading Works.
- Worked at Forrest Frick Pumping Plant unit #2 annunciator panel and alarms with contractor. Troubleshoot the panel telemetry control circuit and found a bad circuit board. Disconnected the bad circuit board and burnt 24vdc fuse. Troubleshoot unit #7 and unit #8 unwanted shutdown. Also, found and replaced bad control relays on unit #7 and unit #8.
- Assisted contractor at Pump Plant N24-P1 for maintenance shutdown.
- Created and edited master SCADA remote monitoring.

FORREST FRICK PUMPING PLANT

- 5,531 AF of water was pumped during the month.

HOWARD FRICK PUMPING PLANT (AQUEDUCT INTERTIE)

- 0 AF was delivered to the District from the CA Aqueduct through the Howard Frick Pumping Plant/Pipeline and 0 AF was returned.